

Datasheet for ABIN7259480

**anti-RPL18A antibody**[Go to Product page](#)**1** Image

## Overview

|              |                                       |
|--------------|---------------------------------------|
| Quantity:    | 200 µL                                |
| Target:      | RPL18A                                |
| Reactivity:  | Human, Mouse, Rat                     |
| Host:        | Rabbit                                |
| Clonality:   | Polyclonal                            |
| Conjugate:   | This RPL18A antibody is un-conjugated |
| Application: | Western Blotting (WB)                 |

## Product Details

|                  |   |
|------------------|---|
| Immunogen:       | Recombinant fusion protein of human RPL18A (NP_000971.1). |
| Isotype:         | IgG   |
| Characteristics: | Polyclonal Antibody                                       |
| Purification:    | Affinity purification                                     |

## Target Details

|                   |   |
|-------------------|---|
| Target:           | RPL18A  |
| Alternative Name: | RPL18A ( <a href="#">RPL18A Products</a> )  |
| Background:       | Ribosomes, the organelles that catalyze protein synthesis, consist of a small 40S subunit and a large 60S subunit. Together these subunits are composed of 4 RNA species and approximately 80 structurally distinct proteins. This gene encodes a member of the L18AE family of ribosomal proteins that is a component of the 60S subunit. The encoded protein may play a role in viral |

## Target Details

replication by interacting with the hepatitis C virus internal ribosome entry site (IRES). This gene is co-transcribed with the U68 snoRNA, located within the third intron. As is typical for genes encoding ribosomal proteins, there are multiple processed pseudogenes of this gene dispersed throughout the genome.

Molecular Weight: Observed\_MW: 21 kDa  
Calculated\_MW: 20 kDa

Gene ID: 6142

UniProt: [Q02543](#)

## Application Details

Application Notes: WB 1:500-1:2000

Restrictions: For Research Use only

## Handling

Format: Liquid

Concentration: 1 mg/mL

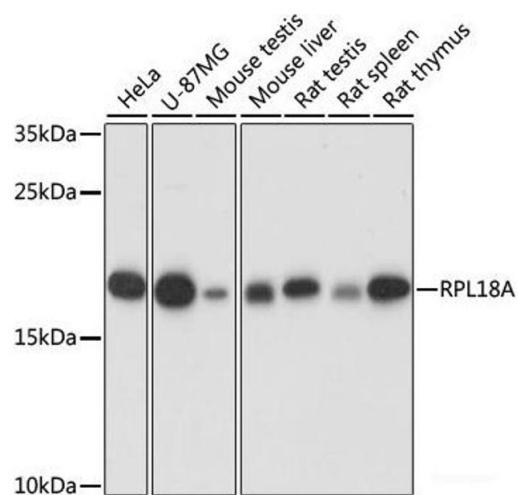
Buffer: PBS with 0.02 % sodium azide, 50 % glycerol, pH 7.3

Preservative: Sodium azide

Precaution of Use: This product contains Sodium azide: a POISONOUS AND HAZARDOUS SUBSTANCE which should be handled by trained staff only.

Storage: -20 °C

Storage Comment: Store at -20°C. Avoid freeze / thaw cycles.



Western Blotting

**Image 1.** Western blot analysis of extracts of various cell lines using RPL18A Polyclonal Antibody at dilution of 1:1000.