



[Go to Product page](#)

Datasheet for ABIN7259494

## anti-CD90 antibody

### 2 Images

#### Overview

Quantity:	200 µL
Target:	CD90 (THY1)
Reactivity:	Mouse, Rat
Host:	Rabbit
Clonality:	Polyclonal
Conjugate:	This CD90 antibody is un-conjugated
Application:	Immunohistochemistry (IHC)

#### Product Details

Immunogen:	A synthetic peptide of human THY1 (NP_006279.2).
Isotype:	IgG
Characteristics:	Polyclonal Antibody
Purification:	Affinity purification

#### Target Details

Target:	CD90 (THY1)
Alternative Name:	THY1 ( <a href="#">THY1 Products</a> )
Background:	This gene encodes a cell surface glycoprotein and member of the immunoglobulin superfamily of proteins. The encoded protein is involved in cell adhesion and cell communication in numerous cell types, but particularly in cells of the immune and nervous systems. The encoded protein is widely used as a marker for hematopoietic stem cells. This gene may function as a

## Target Details

tumor suppressor in nasopharyngeal carcinoma. Alternative splicing results in multiple transcript variants.

Gene ID: 7070

UniProt: [P04216](#)

Pathways: [Cell-Cell Junction Organization](#)

## Application Details

Application Notes: IHC 1:50-1:200

Restrictions: For Research Use only

## Handling

Format: Liquid

Concentration: 1 mg/mL

Buffer: PBS with 0.02 % sodium azide, 50 % glycerol, pH 7.3

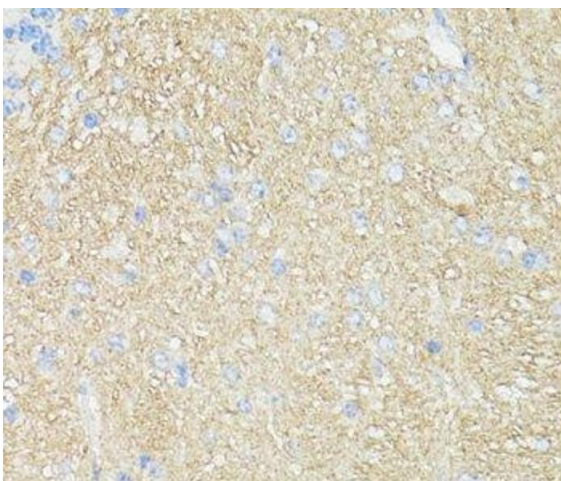
Preservative: Sodium azide

Precaution of Use: This product contains Sodium azide: a POISONOUS AND HAZARDOUS SUBSTANCE which should be handled by trained staff only.

Storage: -20 °C

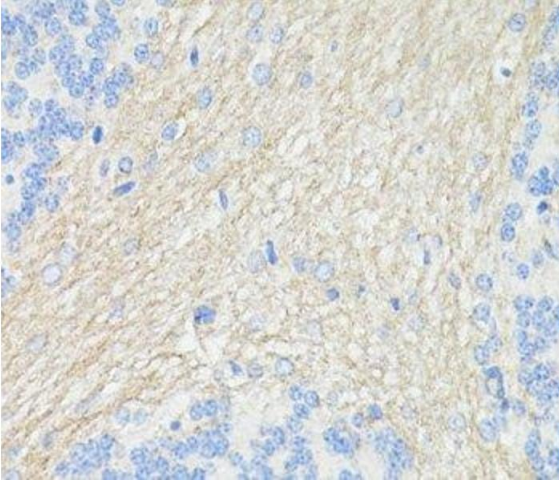
Storage Comment: Store at -20°C. Avoid freeze / thaw cycles.

## Images



### Immunohistochemistry (Paraffin-embedded Sections)

**Image 1.** Immunohistochemistry of paraffin-embedded Mouse brain using THY1 Polyclonal Antibody at dilution of 1:100 (40x lens).



### Immunohistochemistry (Paraffin-embedded Sections)

**Image 2.** Immunohistochemistry of paraffin-embedded Rat brain using THY1 Polyclonal Antibody at dilution of 1:100 (40x lens).