

Datasheet for ABIN7259530

anti-RAB11A antibody

3 Images

[Go to Product page](#)

Overview

Quantity:	200 µL
Target:	RAB11A
Reactivity:	Human, Mouse, Rat
Host:	Rabbit
Clonality:	Polyclonal
Conjugate:	This RAB11A antibody is un-conjugated
Application:	Immunofluorescence (IF)

Product Details

Immunogen:	Recombinant protein of human RAB11A.
Isotype:	IgG
Characteristics:	Polyclonal Antibody
Purification:	Affinity purification

Target Details

Target:	RAB11A
Alternative Name:	RAB11A (RAB11A Products)
Background:	The protein encoded by this gene belongs to the Rab family of the small GTPase superfamily. It is associated with both constitutive and regulated secretory pathways, and may be involved in protein transport. Two transcript variants encoding different isoforms have been found for this gene.

Target Details

Gene ID:	8766
UniProt:	P62491
Pathways:	Regulation of Cell Size , Thromboxane A2 Receptor Signaling , Regulation of long-term Neuronal Synaptic Plasticity

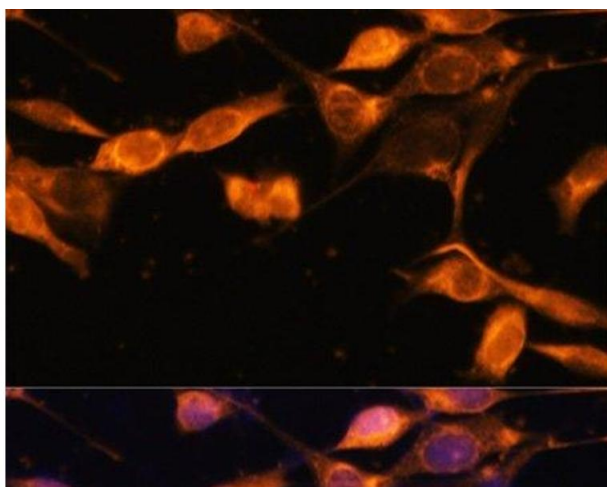
Application Details

Application Notes:	IF 1:50-1:100
Restrictions:	For Research Use only

Handling

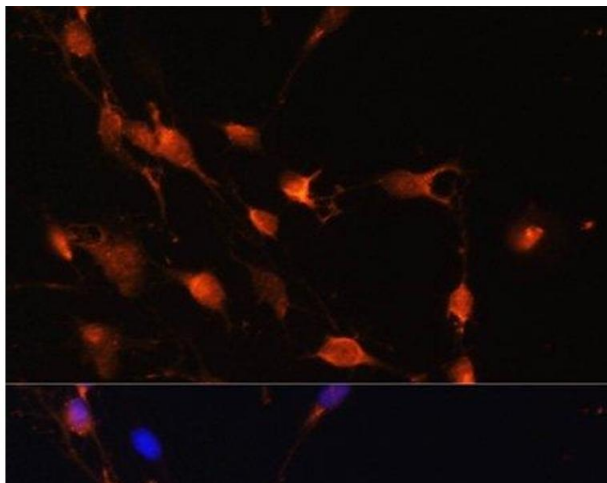
Format:	Liquid
Concentration:	1 mg/mL
Buffer:	PBS with 0.02 % sodium azide, 50 % glycerol, pH 7.3
Preservative:	Sodium azide
Precaution of Use:	This product contains Sodium azide: a POISONOUS AND HAZARDOUS SUBSTANCE which should be handled by trained staff only.
Storage:	-20 °C
Storage Comment:	Store at -20°C. Avoid freeze / thaw cycles.

Images



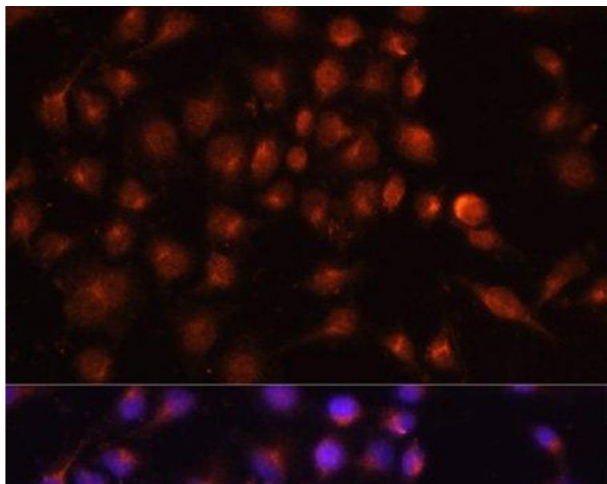
Immunofluorescence

Image 1. Immunofluorescence analysis of NIH-3T3 cells using RAB11A Polyclonal Antibody at dilution of 1:100. Blue: DAPI for nuclear staining.



Immunofluorescence

Image 2. Immunofluorescence analysis of C6 cells using RAB11A Polyclonal Antibody at dilution of 1:100. Blue: DAPI for nuclear staining.



Immunofluorescence

Image 3. Immunofluorescence analysis of HeLa cells using RAB11A Polyclonal Antibody at dilution of 1:100. Blue: DAPI for nuclear staining.