

Datasheet for ABIN7259538

anti-Cofilin antibody

4 Images

[Go to Product page](#)

Overview

Quantity:	200 µL
Target:	Cofilin (CFL1)
Reactivity:	Human, Mouse, Rat
Host:	Rabbit
Clonality:	Polyclonal
Conjugate:	This Cofilin antibody is un-conjugated
Application:	Western Blotting (WB), Immunohistochemistry (IHC), Immunofluorescence (IF)

Product Details

Immunogen:	A synthetic peptide of human CFL1 (NP_005498.1).
Isotype:	IgG
Characteristics:	Polyclonal Antibody
Purification:	Affinity purification

Target Details

Target:	Cofilin (CFL1)
Alternative Name:	CFL1 (CFL1 Products)
Background:	The protein encoded by this gene can polymerize and depolymerize F-actin and G-actin in a pH - dependent manner. Increased phosphorylation of this protein by LIM kinase aids in Rho- induced reorganization of the actin cytoskeleton. Cofilin is a widely distributed intracellular actin-modulating protein that binds and depolymerizes filamentous F-actin and inhibits the

Target Details

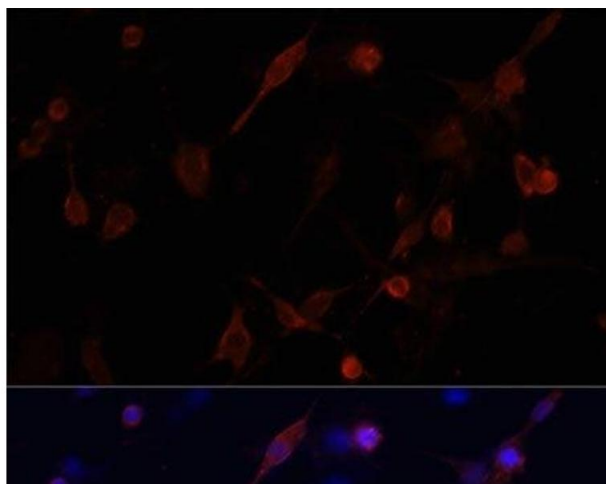
	polymerization of monomeric G-actin in a pH -dependent manner. It is involved in the translocation of actin-cofilin complex from cytoplasm to nucleus.
Molecular Weight:	Observed_MW: 18 kDa Calculated_MW: 18 kDa
Gene ID:	1072
UniProt:	P23528
Pathways:	Regulation of Cell Size , Tube Formation , Protein targeting to Nucleus , CXCR4-mediated Signaling Events

Application Details

Application Notes:	WB 1:500-1:2000 IHC 1:50-1:200 IF 1:50-1:200
Restrictions:	For Research Use only

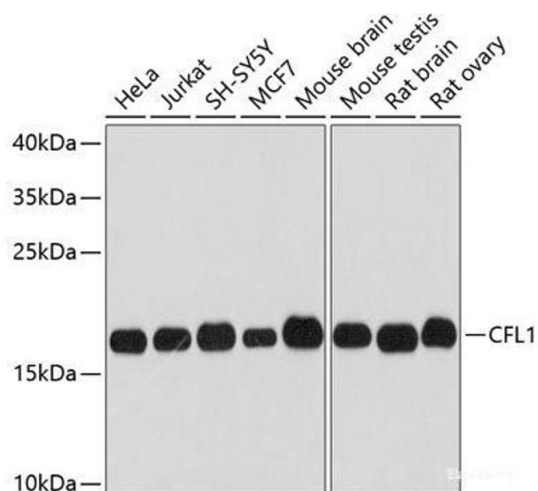
Handling

Format:	Liquid
Concentration:	1 mg/mL
Buffer:	PBS with 0.02 % sodium azide, 50 % glycerol, pH 7.3
Preservative:	Sodium azide
Precaution of Use:	This product contains Sodium azide: a POISONOUS AND HAZARDOUS SUBSTANCE which should be handled by trained staff only.
Storage:	-20 °C
Storage Comment:	Store at -20°C. Avoid freeze / thaw cycles.



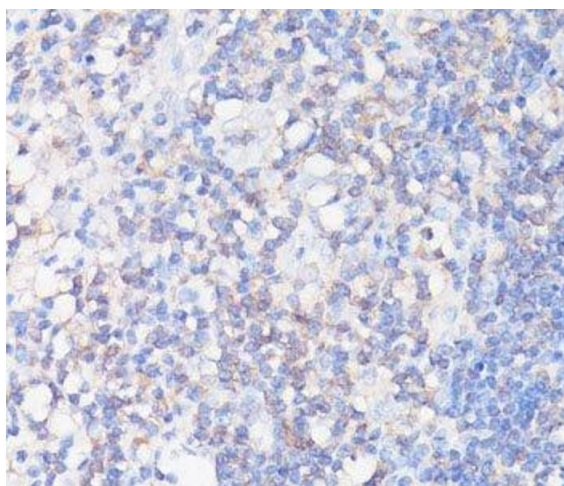
Immunofluorescence

Image 1. Immunofluorescence analysis of PC12 cells using CFL1 Polyclonal Antibody at dilution of 1:100. Blue: DAPI for nuclear staining.



Western Blotting

Image 2. Western blot analysis of extracts of various cell lines using CFL1 Polyclonal Antibody at dilution of 1:3000.



Immunohistochemistry (Paraffin-embedded Sections)

Image 3. Immunohistochemistry of paraffin-embedded Human appendix using CFL1 Polyclonal Antibody at dilution of 1:100 (40x lens).

Please check the [product details page](#) for more images. Overall 4 images are available for ABIN7259538.