



[Go to Product page](#)

Datasheet for ABIN7259542

## anti-Complement Factor B antibody

### 5 Images

#### Overview

Quantity:	200 µL
Target:	Complement Factor B (CFB)
Reactivity:	Human, Mouse, Rat
Host:	Rabbit
Clonality:	Polyclonal
Conjugate:	This Complement Factor B antibody is un-conjugated
Application:	Western Blotting (WB), Immunohistochemistry (IHC), Immunofluorescence (IF)

#### Product Details

Immunogen:	Recombinant fusion protein of human Complement Factor B (NP_001701.2).
Isotype:	IgG
Characteristics:	Polyclonal Antibody
Purification:	Affinity purification

#### Target Details

Target:	Complement Factor B (CFB)
Alternative Name:	Complement Factor B ( <a href="#">CFB Products</a> )
Background:	This gene encodes complement factor B, a component of the alternative pathway of complement activation. Factor B circulates in the blood as a single chain polypeptide. Upon activation of the alternative pathway, it is cleaved by complement factor D yielding the noncatalytic chain Ba and the catalytic subunit Bb. The active subunit Bb is a serine protease

## Target Details

---

which associates with C3b to form the alternative pathway C3 convertase. Bb is involved in the proliferation of preactivated B lymphocytes, while Ba inhibits their proliferation. This gene localizes to the major histocompatibility complex (MHC) class III region on chromosome 6. This cluster includes several genes involved in regulation of the immune reaction. Polymorphisms in this gene are associated with a reduced risk of age-related macular degeneration. The polyadenylation site of this gene is 421 bp from the 5' end of the gene for complement component 2.

---

Molecular Weight:	Observed_MW: 86 kDa Calculated_MW: 68 kDa/85 kDa
-------------------	---

---

Gene ID:	629
----------	-----

---

UniProt:	<a href="#">P00751</a>
----------	------------------------

---

Pathways:	<a href="#">Complement System</a> , <a href="#">Proton Transport</a> , <a href="#">Ribonucleoside Biosynthetic Process</a>
-----------	--

## Application Details

---

---

Application Notes:	WB 1:500-1:2000 IHC 1:50-1:200 IF 1:50-1:200
--------------------	--

---

Restrictions:	For Research Use only
---------------	-----------------------

## Handling

---

---

Format:	Liquid
---------	--------

---

Concentration:	1 mg/mL
----------------	---------

---

Buffer:	PBS with 0.02 % sodium azide, 50 % glycerol, pH 7.3
---------	---

---

Preservative:	Sodium azide
---------------	--------------

---

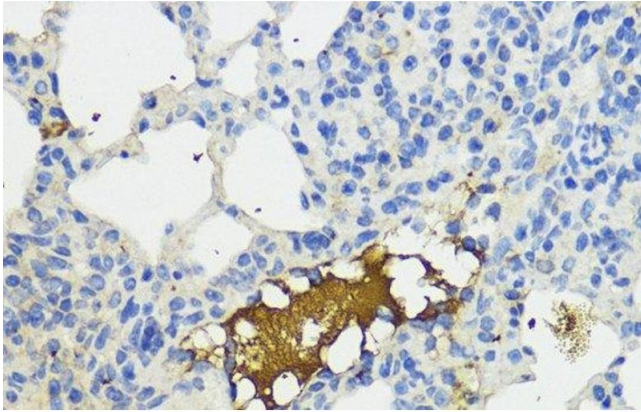
Precaution of Use:	This product contains Sodium azide: a POISONOUS AND HAZARDOUS SUBSTANCE which should be handled by trained staff only.
--------------------	--

---

Storage:	-20 °C
----------	--------

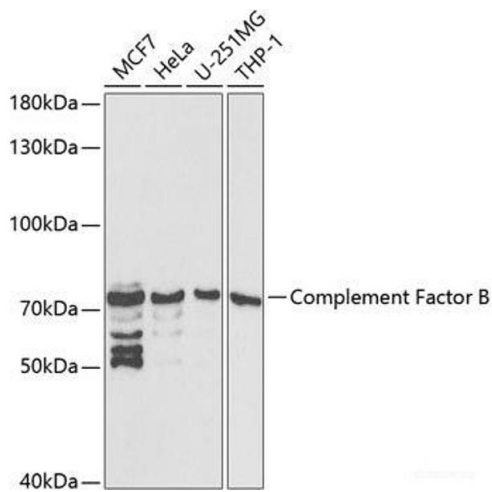
---

Storage Comment:	Store at -20°C. Avoid freeze / thaw cycles.
------------------	---



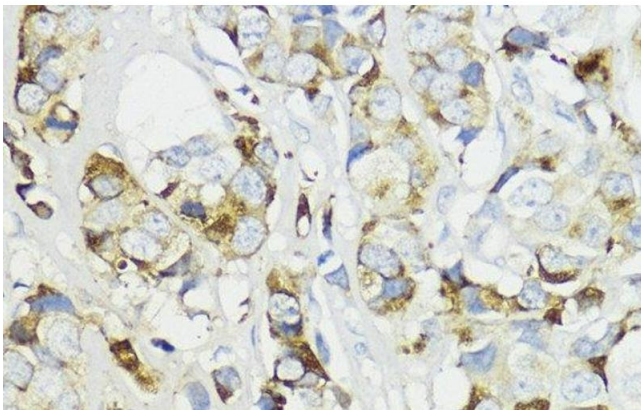
### Immunohistochemistry (Paraffin-embedded Sections)

**Image 1.** Immunohistochemistry of paraffin-embedded Mouse lung using Complement Factor B Polyclonal Antibody at dilution of 1:200 (40x lens).



### Western Blotting

**Image 2.** Western blot analysis of extracts of various cell lines using Complement Factor B Polyclonal Antibody at dilution of 1:1000.



### Immunohistochemistry (Paraffin-embedded Sections)

**Image 3.** Immunohistochemistry of paraffin-embedded Human mammary cancer using Complement Factor B Polyclonal Antibody at dilution of 1:200 (40x lens).

Please check the [product details page](#) for more images. Overall 5 images are available for ABIN7259542.