



[Go to Product page](#)

## Datasheet for ABIN7259550 anti-Dynamin 1-Like antibody

### 4 Images

#### Overview

Quantity:	200 µL
Target:	Dynamin 1-Like (DNM1L)
Reactivity:	Human, Mouse, Rat
Host:	Rabbit
Clonality:	Polyclonal
Conjugate:	This Dynamin 1-Like antibody is un-conjugated
Application:	Western Blotting (WB), Immunofluorescence (IF)

#### Product Details

Immunogen:	Recombinant protein of human DRP1
Isotype:	IgG
Characteristics:	Polyclonal Antibody
Purification:	Affinity purification

#### Target Details

Target:	Dynamin 1-Like (DNM1L)
Alternative Name:	DRP1 ( <a href="#">DNM1L Products</a> )
Background:	This gene encodes a member of the dynamin superfamily of GTPases. The encoded protein mediates mitochondrial and peroxisomal division, and is involved in developmentally regulated apoptosis and programmed necrosis. Dysfunction of this gene is implicated in several neurological disorders, including Alzheimer's disease. Mutations in this gene are associated

## Target Details

---

with the autosomal dominant disorder, encephalopathy, lethal, due to defective mitochondrial and peroxisomal fission (EMPF). Alternative splicing results in multiple transcript variants encoding different isoforms.

Molecular Weight:	Observed_MW: 82 kDa Calculated_MW: 60 kDa/78 kDa/79 kDa/80 kDa/81 kDa/82 kDa/83 kDa
Gene ID:	10059
UniProt:	<a href="#">O00429</a>

## Application Details

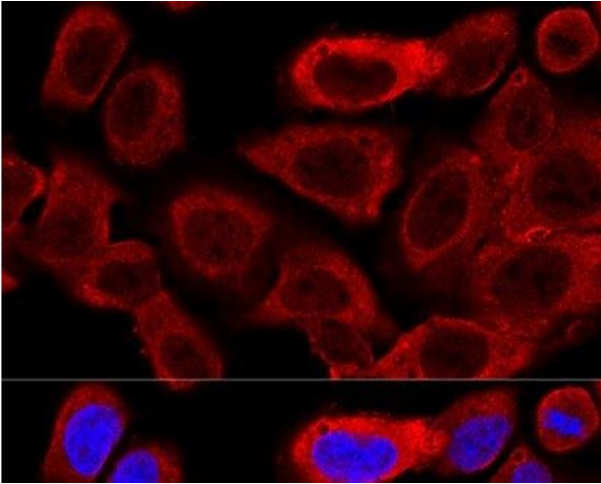
---

Application Notes:	WB 1:500-1:2000 IF 1:50-1:200
Restrictions:	For Research Use only

## Handling

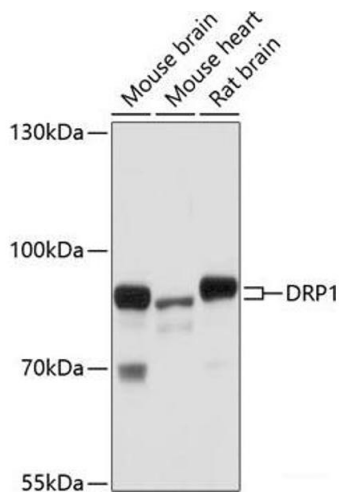
---

Format:	Liquid
Concentration:	1 mg/mL
Buffer:	PBS with 0.02 % sodium azide, 50 % glycerol, pH 7.3
Preservative:	Sodium azide
Precaution of Use:	This product contains Sodium azide: a POISONOUS AND HAZARDOUS SUBSTANCE which should be handled by trained staff only.
Storage:	-20 °C
Storage Comment:	Store at -20°C. Avoid freeze / thaw cycles.



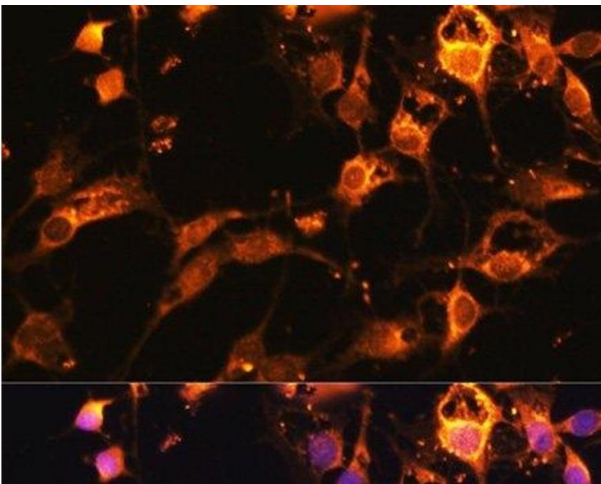
### Immunofluorescence

**Image 1.** Confocal immunofluorescence analysis of U-2 OS cells using DRP1 Polyclonal Antibody at dilution of 1:200. Blue: DAPI for nuclear staining.



### Western Blotting

**Image 2.** Western blot analysis of extracts of various cell lines using DRP1 Polyclonal Antibody at dilution of 1:1000.



### Immunofluorescence

**Image 3.** Immunofluorescence analysis of C6 cells using DRP1 Polyclonal Antibody at dilution of 1:100. Blue: DAPI for nuclear staining.

Please check the [product details page](#) for more images. Overall 4 images are available for ABIN7259550.