

Datasheet for ABIN7259586

anti-CYP11A1 antibody

3 Images

[Go to Product page](#)

Overview

Quantity:	200 µL
Target:	CYP11A1
Reactivity:	Human, Rat, Mouse
Host:	Rabbit
Clonality:	Polyclonal
Conjugate:	This CYP11A1 antibody is un-conjugated
Application:	Western Blotting (WB), Immunohistochemistry (IHC), Immunofluorescence (IF)

Product Details

Immunogen:	Recombinant fusion protein of human CYP11A1 (NP_000772.2).
Isotype:	IgG
Characteristics:	Polyclonal Antibody
Purification:	Affinity purification

Target Details

Target:	CYP11A1
Alternative Name:	CYP11A1 (CYP11A1 Products)
Background:	This gene encodes a member of the cytochrome P450 superfamily of enzymes. The cytochrome P450 proteins are monooxygenases which catalyze many reactions involved in drug metabolism and synthesis of cholesterol, steroids and other lipids. This protein localizes to the mitochondrial inner membrane and catalyzes the conversion of cholesterol to

Target Details

pregnenolone, the first and rate-limiting step in the synthesis of the steroid hormones. Two transcript variants encoding different isoforms have been found for this gene. The cellular location of the smaller isoform is unclear since it lacks the mitochondrial-targeting transit peptide.

Molecular Weight: Observed_MW: 50 kDa

Calculated_MW: 42 kDa/60 kDa

Gene ID: 1583

UniProt: [P05108](#)

Pathways: [Metabolism of Steroid Hormones and Vitamin D](#), [Steroid Hormone Biosynthesis](#), [C21-Steroid Hormone Metabolic Process](#), [Cellular Response to Molecule of Bacterial Origin](#)

Application Details

Application Notes: WB 1:500-1:2000 IHC 1:20-1:50 IF 1:20-1:50

Restrictions: For Research Use only

Handling

Format: Liquid

Concentration: 1 mg/mL

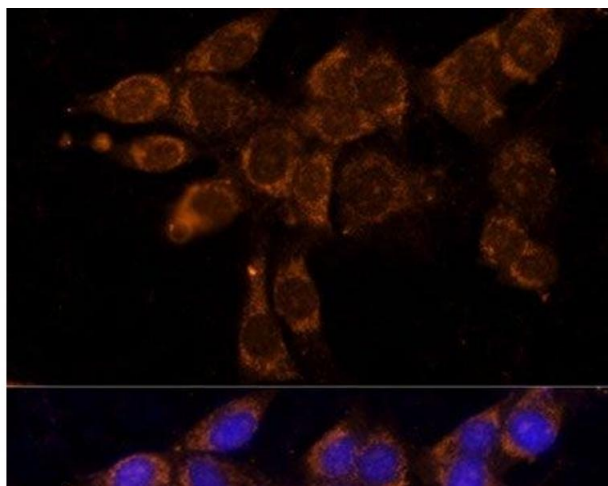
Buffer: PBS with 0.02 % sodium azide, 50 % glycerol, pH 7.3

Preservative: Sodium azide

Precaution of Use: This product contains Sodium azide: a POISONOUS AND HAZARDOUS SUBSTANCE which should be handled by trained staff only.

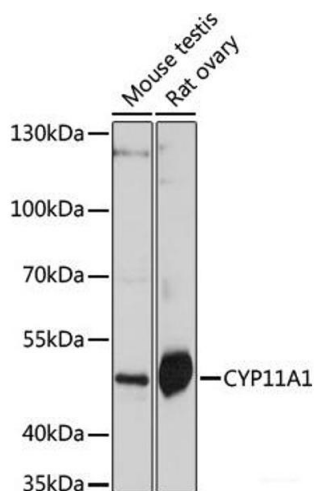
Storage: -20 °C

Storage Comment: Store at -20°C. Avoid freeze / thaw cycles.



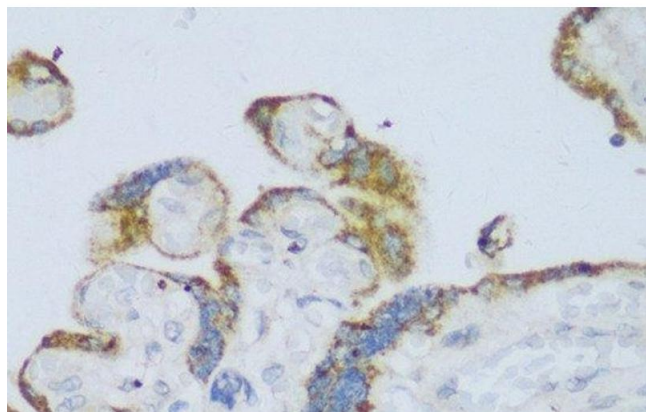
Immunofluorescence

Image 1. Immunofluorescence analysis of NIH/3T3 cells using CYP11A1 Polyclonal Antibody at dilution of 1:100. Blue: DAPI for nuclear staining.



Western Blotting

Image 2. Western blot analysis of extracts of various cell lines using CYP11A1 Polyclonal Antibody at dilution of 1:1000.



Immunohistochemistry (Paraffin-embedded Sections)

Image 3. Immunohistochemistry of paraffin-embedded Human placenta using CYP11A1 Polyclonal Antibody at dilution of 1:150 (40x lens).