

Datasheet for ABIN7259588

**anti-CNNM4 antibody**[Go to Product page](#)**1** Image

## Overview

Quantity:	200 µL
Target:	CNNM4
Reactivity:	Mouse, Rat
Host:	Rabbit
Clonality:	Polyclonal
Conjugate:	This CNNM4 antibody is un-conjugated
Application:	Western Blotting (WB)

## Product Details

Immunogen:	A synthetic peptide of human CNNM4.
Isotype:	IgG
Characteristics:	Polyclonal Antibody
Purification:	Affinity purification

## Target Details

Target:	CNNM4
Alternative Name:	CNNM4 ( <a href="#">CNNM4 Products</a> )
Background:	<p>This gene encodes a member of the ancient conserved domain containing protein family. Members of this protein family contain a cyclin box motif and have structural similarity to the cyclins. The encoded protein may play a role in metal ion transport. Mutations in this gene are associated with Jalili syndrome which consists of cone-rod dystrophy and amelogenesis</p>

## Target Details

	imperfecta.
Molecular Weight:	Observed_MW: 87 kDa Calculated_MW: 87 kDa
Gene ID:	26504
UniProt:	<a href="#">Q6P4Q7</a>

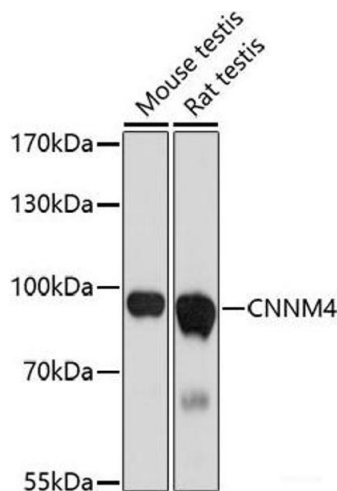
## Application Details

Application Notes:	WB 1:500-1:2000
Restrictions:	For Research Use only

## Handling

Format:	Liquid
Concentration:	1 mg/mL
Buffer:	PBS with 0.02 % sodium azide, 50 % glycerol, pH 7.3
Preservative:	Sodium azide
Precaution of Use:	This product contains Sodium azide: a POISONOUS AND HAZARDOUS SUBSTANCE which should be handled by trained staff only.
Storage:	-20 °C
Storage Comment:	Store at -20°C. Avoid freeze / thaw cycles.

## Images



### Western Blotting

**Image 1.** Western blot analysis of extracts of various cell lines using CNNM4 Polyclonal Antibody at dilution of 1:1000.