

Datasheet for ABIN7259598

anti-FCF1 antibody

3 Images



[Go to Product page](#)

Overview

Quantity:	200 µL
Target:	FCF1
Reactivity:	Human, Rat
Host:	Rabbit
Clonality:	Polyclonal
Conjugate:	This FCF1 antibody is un-conjugated
Application:	Immunofluorescence (IF), Western Blotting (WB)

Product Details

Immunogen:	A synthetic peptide of human FCF1.
Isotype:	IgG
Characteristics:	Polyclonal Antibody
Purification:	Affinity purification

Target Details

Target:	FCF1
Alternative Name:	FCF1 (FCF1 Products)
Background:	FCF1 (FCF1 RRNA-Processing Protein) is a Protein Coding gene. Diseases associated with FCF1 include Progressive External Ophthalmoplegia With Mitochondrial Dna Deletions, Autosomal Dominant 2. Among its related pathways are rRNA processing in the nucleus and cytosol and Gene Expression. An important paralog of this gene is UTP23.

Target Details

Molecular Weight: Observed_MW: 23 kDa
Calculated_MW: 23 kDa

Gene ID: 51077

UniProt: [Q9Y324](#)

Application Details

Application Notes: WB 1:500-1:2000 IF 1:50-1:200

Restrictions: For Research Use only

Handling

Format: Liquid

Concentration: 1 mg/mL

Buffer: PBS with 0.02 % sodium azide, 50 % glycerol, pH 7.3

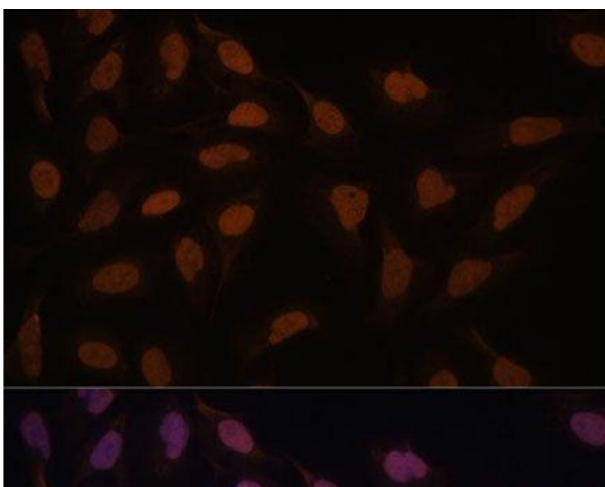
Preservative: Sodium azide

Precaution of Use: This product contains Sodium azide: a POISONOUS AND HAZARDOUS SUBSTANCE which should be handled by trained staff only.

Storage: -20 °C

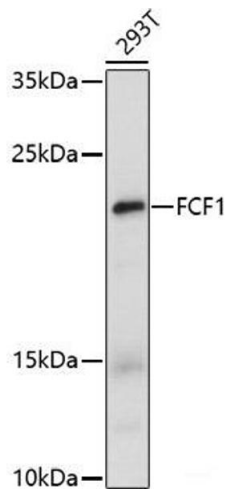
Storage Comment: Store at -20°C. Avoid freeze / thaw cycles.

Images



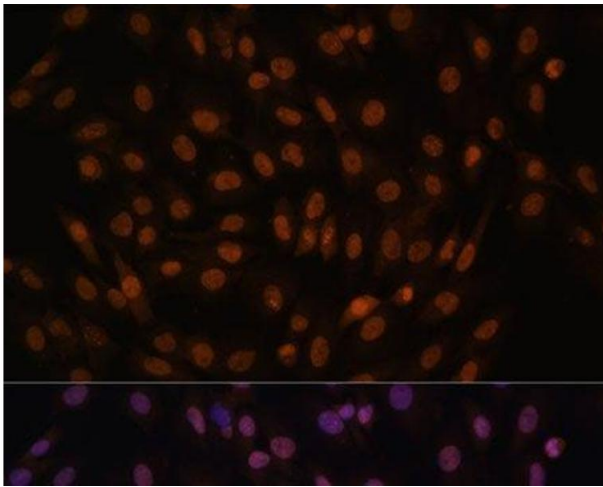
Immunofluorescence

Image 1. Immunofluorescence analysis of U-2 OS cells using FCF1 Polyclonal Antibody at dilution of 1:100. Blue: DAPI for nuclear staining.



Western Blotting

Image 2. Western blot analysis of extracts of 293T cells using FCF1 Polyclonal Antibody at dilution of 1:1000.



Immunofluorescence

Image 3. Immunofluorescence analysis of C6 cells using FCF1 Polyclonal Antibody at dilution of 1:100. Blue: DAPI for nuclear staining.