

Datasheet for ABIN7259628

anti-Claspin antibody[Go to Product page](#)**1** Image

Overview

Quantity:	200 µL
Target:	Claspin (CLSPN)
Reactivity:	Human
Host:	Rabbit
Clonality:	Polyclonal
Conjugate:	This Claspin antibody is un-conjugated
Application:	Western Blotting (WB)

Product Details

Immunogen:	A synthetic peptide of human CLSPN (NP_001177410.1).
Isotype:	IgG
Characteristics:	Polyclonal Antibody
Purification:	Affinity purification

Target Details

Target:	Claspin (CLSPN)
Alternative Name:	CLSPN (CLSPN Products)
Background:	The product of this gene is an essential upstream regulator of checkpoint kinase 1 and triggers a checkpoint arrest of the cell cycle in response to replicative stress or DNA damage. The protein is also required for efficient DNA replication during a normal S phase. Multiple transcript variants encoding different isoforms have been found for this gene.

Target Details

Molecular Weight:	Observed_MW: 275 kDa
	Calculated_MW: 151 kDa
Gene ID:	63967
UniProt:	Q9HAW4

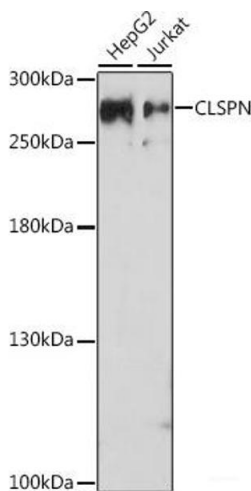
Application Details

Application Notes:	WB 1:500-1:2000
Restrictions:	For Research Use only

Handling

Format:	Liquid
Concentration:	1 mg/mL
Buffer:	PBS with 0.02 % sodium azide, 50 % glycerol, pH 7.3
Preservative:	Sodium azide
Precaution of Use:	This product contains Sodium azide: a POISONOUS AND HAZARDOUS SUBSTANCE which should be handled by trained staff only.
Storage:	-20 °C
Storage Comment:	Store at -20°C. Avoid freeze / thaw cycles.

Images



Western Blotting

Image 1. Western blot analysis of extracts of various cell lines using CLSPN Polyclonal Antibody at dilution of 1:1000.