

Datasheet for ABIN7259656
anti-SLC26A11 antibody[Go to Product page](#)

1 Image

Overview

Quantity:	200 µL
Target:	SLC26A11
Reactivity:	Mouse
Host:	Rabbit
Clonality:	Polyclonal
Conjugate:	This SLC26A11 antibody is un-conjugated
Application:	Western Blotting (WB)

Product Details

Immunogen:	A synthetic peptide of human SLC26A11 (NP_001159819.1).
Isotype:	IgG
Characteristics:	Polyclonal Antibody
Purification:	Affinity purification

Target Details

Target:	SLC26A11
Alternative Name:	SLC26A11 (SLC26A11 Products)
Background:	<p>This gene encodes a member of the solute linked carrier 26 family of anion exchangers. Members of this family of proteins are essential for numerous cellular functions including homeostasis and intracellular electrolyte balance. The encoded protein is a sodium independent sulfate transporter that is sensitive to the anion exchanger inhibitor 4,4'-</p>

Target Details

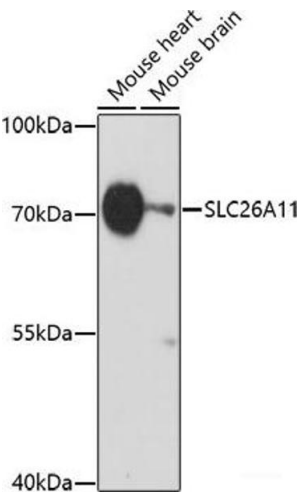
	diisothiocyanostilbene-2,2'-disulfonic acid. Alternate splicing results in multiple transcript variants.
Molecular Weight:	Observed_MW: 70 kDa Calculated_MW: 65 kDa
Gene ID:	284129
UniProt:	Q86WA9

Application Details

Application Notes:	WB 1:500-1:2000
Restrictions:	For Research Use only

Handling

Format:	Liquid
Concentration:	1 mg/mL
Buffer:	PBS with 0.02 % sodium azide, 50 % glycerol, pH 7.3
Preservative:	Sodium azide
Precaution of Use:	This product contains Sodium azide: a POISONOUS AND HAZARDOUS SUBSTANCE which should be handled by trained staff only.
Storage:	-20 °C
Storage Comment:	Store at -20°C. Avoid freeze / thaw cycles.



Western Blotting

Image 1. Western blot analysis of extracts of various cell lines using SLC26A11 Polyclonal Antibody at dilution of 1:1000.