

Datasheet for ABIN7259777

**anti-LDHB antibody**[Go to Product page](#)

## 1 Image

## Overview

Quantity:	200 µL
Target:	LDHB
Reactivity:	Human, Rat, Mouse
Host:	Rabbit
Clonality:	Polyclonal
Conjugate:	This LDHB antibody is un-conjugated
Application:	Western Blotting (WB)

## Product Details

Immunogen:	Recombinant fusion protein of human LDHB (NP_002291.1).
Isotype:	IgG
Specificity:	This antibody ist KO validated.
Characteristics:	Polyclonal Antibody
Purification:	Affinity purification
Grade:	KO Validated

## Target Details

Target:	LDHB
Alternative Name:	LDHB ( <a href="#">LDHB Products</a> )
Background:	This gene encodes the B subunit of lactate dehydrogenase enzyme, which catalyzes the

## Target Details

interconversion of pyruvate and lactate with concomitant interconversion of NADH and NAD<sup>+</sup> in a post-glycolysis process. Alternatively spliced transcript variants have been found for this gene. Recent studies have shown that a C-terminally extended isoform is produced by use of an alternative in-frame translation termination codon via a stop codon readthrough mechanism, and that this isoform is localized in the peroxisomes. Mutations in this gene are associated with lactate dehydrogenase B deficiency. Pseudogenes have been identified on chromosomes X, 5 and 13.

Molecular Weight: Observed\_MW: 37 kDa  
Calculated\_MW: 36 kDa

Gene ID: 3945

UniProt: [P07195](#)

Pathways: [Warburg Effect](#)

## Application Details

Application Notes: WB 1:500-1:2000

Restrictions: For Research Use only

## Handling

Format: Liquid

Concentration: 1 mg/mL

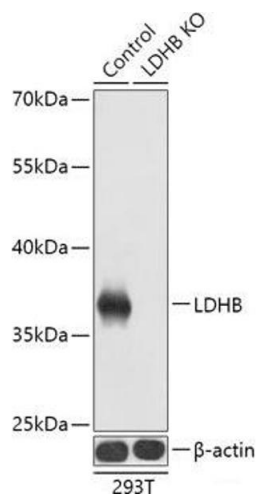
Buffer: PBS with 0.02 % sodium azide, 50 % glycerol, pH 7.3

Preservative: Sodium azide

Precaution of Use: This product contains Sodium azide: a POISONOUS AND HAZARDOUS SUBSTANCE which should be handled by trained staff only.

Storage: -20 °C

Storage Comment: Store at -20°C. Avoid freeze / thaw cycles.



Western Blotting

**Image 1.** Western blot analysis of extracts from normal (control) and LDHB knockout (KO) 293T cells using LDHB Polyclonal Antibody at dilution of 1:1000.