

Datasheet for ABIN7259789
anti-CEACAM5 antibody[Go to Product page](#)

2 Images

Overview

Quantity:	200 µL
Target:	CEACAM5
Reactivity:	Human
Host:	Mouse
Clonality:	Monoclonal
Conjugate:	This CEACAM5 antibody is un-conjugated
Application:	Western Blotting (WB), Immunohistochemistry (IHC)

Product Details

Immunogen:	Recombinant protein of human CEACAM5
Isotype:	IgG
Characteristics:	Monoclonal Antibody
Purification:	Affinity purification

Target Details

Target:	CEACAM5
Alternative Name:	CEACAM5 (CEACAM5 Products)
Background:	This gene encodes a cell surface glycoprotein that represents the founding member of the carcinoembryonic antigen (CEA) family of proteins. The encoded protein is used as a clinical biomarker for gastrointestinal cancers and may promote tumor development through its role as a cell adhesion molecule. Additionally, the encoded protein may regulate differentiation,

Target Details

apoptosis, and cell polarity. This gene is present in a CEA family gene cluster on chromosome 19. Alternative splicing results in multiple transcript variants.

Molecular Weight: Observed_MW: 200 kDa
Calculated_MW: 76 kDa

Gene ID: 1048

UniProt: [P06731](#)

Application Details

Application Notes: WB 1:500-1:2000 IHC 1:50-1:200

Restrictions: For Research Use only

Handling

Format: Liquid

Concentration: 1 mg/mL

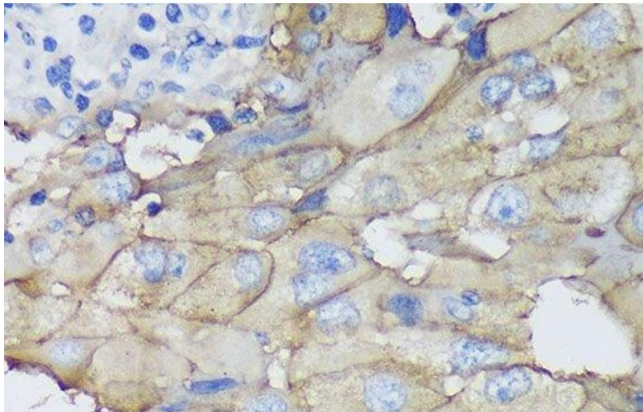
Buffer: PBS with 0.02 % sodium azide, 50 % glycerol, pH 7.3

Preservative: Sodium azide

Precaution of Use: This product contains Sodium azide: a POISONOUS AND HAZARDOUS SUBSTANCE which should be handled by trained staff only.

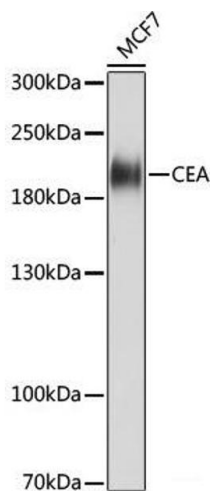
Storage: -20 °C

Storage Comment: Store at -20°C. Avoid freeze / thaw cycles.



Immunohistochemistry (Paraffin-embedded Sections)

Image 1. Immunohistochemistry of paraffin-embedded Human mammary cancer using CEACAM5 Monoclonal Antibody at dilution of 1:100 (40x lens).



Western Blotting

Image 2. Western blot analysis of extracts of MCF7 cells using CEACAM5 Monoclonal Antibody at dilution of 1:1000.