

Datasheet for ABIN7259797

anti-CysLTR1 antibody**1** Image[Go to Product page](#)

Overview

| | |
|--------------|--|
| Quantity: | 200 µL |
| Target: | CysLTR1 (CYSLTR1) |
| Reactivity: | Human, Mouse |
| Host: | Rabbit |
| Clonality: | Polyclonal |
| Conjugate: | This CysLTR1 antibody is un-conjugated |
| Application: | Western Blotting (WB) |

Product Details

| | |
|------------------|---|
| Immunogen: | A synthetic peptide of human CYSLTR1 (NP_006630.1). |
| Isotype: | IgG |
| Characteristics: | Polyclonal Antibody |
| Purification: | Affinity purification |

Target Details

| | |
|-------------------|---|
| Target: | CysLTR1 (CYSLTR1) |
| Alternative Name: | CYSLTR1 (CYSLTR1 Products) |
| Background: | This gene encodes a member of the G-protein coupled receptor 1 family. The encoded protein is a receptor for cysteinyl leukotrienes, and is involved in mediating bronchoconstriction via activation of a phosphatidylinositol-calcium second messenger system. Activation of the encoded receptor results in contraction and proliferation of bronchial smooth muscle cells, |

Target Details

eosinophil migration, and damage to the mucus layer in the lung. Upregulation of this gene is associated with asthma and dysregulation may also be implicated in cancer. Alternative splicing results in multiple transcript variants.

Molecular Weight: Observed_MW: 38 kDa
Calculated_MW: 38 kDa

Gene ID: 10800

UniProt: [Q9Y271](#)

Application Details

Application Notes: WB 1:500-1:2000

Restrictions: For Research Use only

Handling

Format: Liquid

Concentration: 1 mg/mL

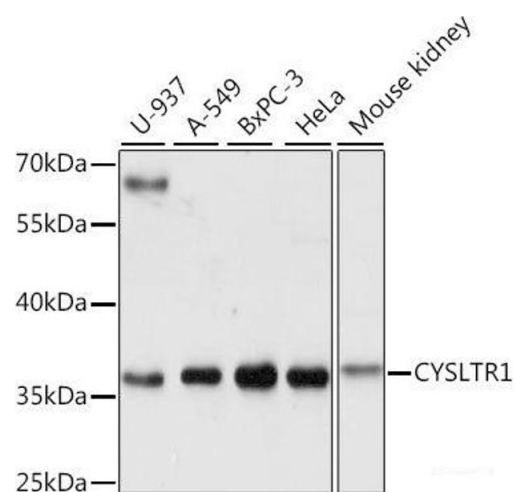
Buffer: PBS with 0.02 % sodium azide, 50 % glycerol, pH 7.3

Preservative: Sodium azide

Precaution of Use: This product contains Sodium azide: a POISONOUS AND HAZARDOUS SUBSTANCE which should be handled by trained staff only.

Storage: -20 °C

Storage Comment: Store at -20°C. Avoid freeze / thaw cycles.



Western Blotting

Image 1. Western blot analysis of extracts of various cell lines using CYSLTR1 Polyclonal Antibody at dilution of 1:1000.