



Datasheet for ABIN7259803 anti-CFAP61 antibody



[Go to Product page](#)

1 Image

Overview

Quantity:	200 µL
Target:	CFAP61
Reactivity:	Human, Mouse
Host:	Rabbit
Clonality:	Polyclonal
Conjugate:	This CFAP61 antibody is un-conjugated
Application:	Western Blotting (WB)

Product Details

Immunogen:	A synthetic peptide of human CFAP61.
Isotype:	IgG
Characteristics:	Polyclonal Antibody
Purification:	Affinity purification

Target Details

Target:	CFAP61
Alternative Name:	CFAP61 (CFAP61 Products)
Background:	CFAP61 (Cilia And Flagella Associated Protein 61) is a Protein Coding gene. Diseases associated with CFAP61 include Rigid Spine Muscular Dystrophy 1 and Corneal Dystrophy, Endothelial, X-Linked. Gene Ontology (GO) annotations related to this gene include oxidoreductase activity.

Target Details

Molecular Weight: Observed_MW: 141 kDa
Calculated_MW: 141 kDa

Gene ID: 26074

UniProt: [Q8NHU2](#)

Application Details

Application Notes: WB 1:500-1:2000

Restrictions: For Research Use only

Handling

Format: Liquid

Concentration: 1 mg/mL

Buffer: PBS with 0.02 % sodium azide, 50 % glycerol, pH 7.3

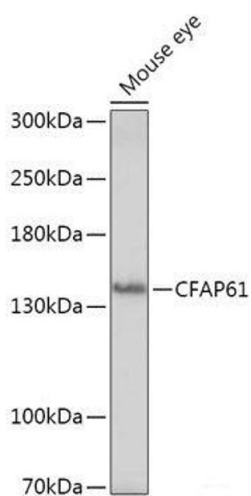
Preservative: Sodium azide

Precaution of Use: This product contains Sodium azide: a POISONOUS AND HAZARDOUS SUBSTANCE which should be handled by trained staff only.

Storage: -20 °C

Storage Comment: Store at -20°C. Avoid freeze / thaw cycles.

Images



Western Blotting

Image 1. Western blot analysis of extracts of Mouse eye using CFAP61 Polyclonal Antibody at dilution of 1:1000.