

Datasheet for ABIN7259823

anti-CARTPT antibody

3 Images

[Go to Product page](#)

Overview

Quantity:	200 µL
Target:	CARTPT
Reactivity:	Human, Mouse, Rat
Host:	Rabbit
Clonality:	Polyclonal
Conjugate:	This CARTPT antibody is un-conjugated
Application:	Immunohistochemistry (IHC)

Product Details

Immunogen:	Recombinant protein of human CARTPT.
Isotype:	IgG
Characteristics:	Polyclonal Antibody
Purification:	Affinity purification

Target Details

Target:	CARTPT
Alternative Name:	CARTPT (CARTPT Products)
Background:	This gene encodes a secreted protein which is processed by prohormone/proprotein convertases to produce smaller, biologically active peptides. Expression of the transcript for this gene is regulated by certain drugs such as cocaine, and the encoded protein is thought to be involved in the regulation of appetite and stress. Mutations in this gene are associated with

Target Details

	susceptibility to obesity.
Gene ID:	9607
UniProt:	Q16568
Pathways:	Hormone Transport , Negative Regulation of Hormone Secretion , Carbohydrate Homeostasis , Feeding Behaviour

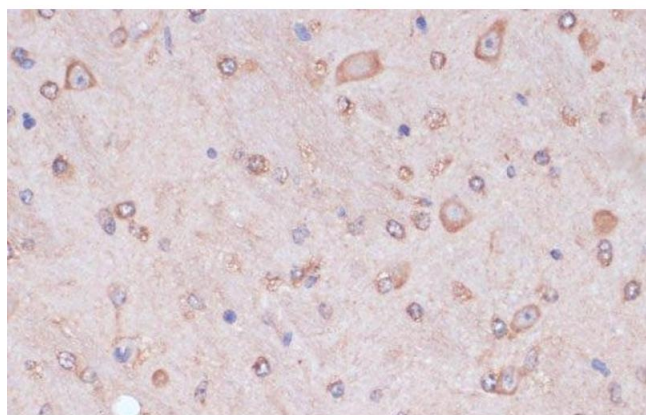
Application Details

Application Notes:	IHC 1:50-1:200
Restrictions:	For Research Use only

Handling

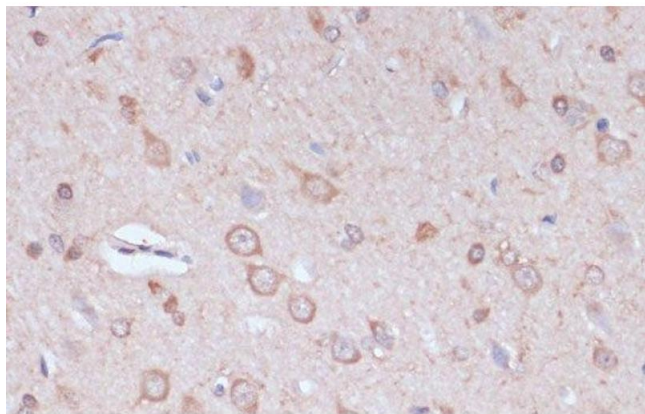
Format:	Liquid
Concentration:	1 mg/mL
Buffer:	PBS with 0.02 % sodium azide, 50 % glycerol, pH 7.3
Preservative:	Sodium azide
Precaution of Use:	This product contains Sodium azide: a POISONOUS AND HAZARDOUS SUBSTANCE which should be handled by trained staff only.
Storage:	-20 °C
Storage Comment:	Store at -20°C. Avoid freeze / thaw cycles.

Images



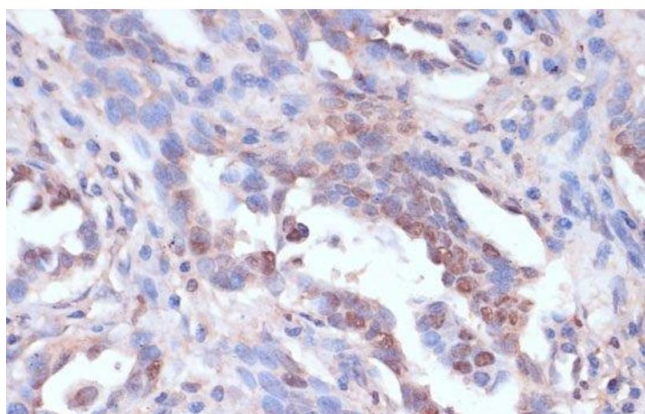
Immunohistochemistry (Paraffin-embedded Sections)

Image 1. Immunohistochemistry of paraffin-embedded Mouse brain using CARTPT Polyclonal Antibody at dilution of 1:100 (40x lens).



Immunohistochemistry (Paraffin-embedded Sections)

Image 2. Immunohistochemistry of paraffin-embedded Rat brain using CARTPT Polyclonal Antibody at dilution of 1:100 (40x lens).



Immunohistochemistry (Paraffin-embedded Sections)

Image 3. Immunohistochemistry of paraffin-embedded Human lung cancer using CARTPT Polyclonal Antibody at dilution of 1:100 (40x lens).