

## Datasheet for ABIN7259841 **anti-PCIF1 antibody**

### 3 Images



[Go to Product page](#)

### Overview

Quantity:	200 µL
Target:	PCIF1
Reactivity:	Human, Mouse, Rat
Host:	Rabbit
Clonality:	Polyclonal
Conjugate:	This PCIF1 antibody is un-conjugated
Application:	Western Blotting (WB), Immunohistochemistry (IHC)

### Product Details

Immunogen:	Recombinant protein of human PCIF1.
Isotype:	IgG
Characteristics:	Polyclonal Antibody
Purification:	Affinity purification

### Target Details

Target:	PCIF1
Alternative Name:	PCIF1 ( <a href="#">PCIF1 Products</a> )
Background:	Cap-specific adenosine methyltransferase that catalyzes formation of N(6),2'-O-dimethyladenosine cap (m6A(m)) by methylating the adenosine at the second transcribed position of capped mRNAs. Recruited to the early elongation complex of RNA polymerase II (RNAPII) via interaction with POLR2A and mediates formation of m6A(m) co-transcriptionally.

## Target Details

Molecular Weight: Observed\_MW: 81 kDa  
Calculated\_MW: 81 kDa

Gene ID: 63935

UniProt: [Q9H4Z3](#)

## Application Details

Application Notes: WB 1:500-1:2000 IHC 1:50-1:200

Restrictions: For Research Use only

## Handling

Format: Liquid

Concentration: 1 mg/mL

Buffer: PBS with 0.02 % sodium azide, 50 % glycerol, pH 7.3

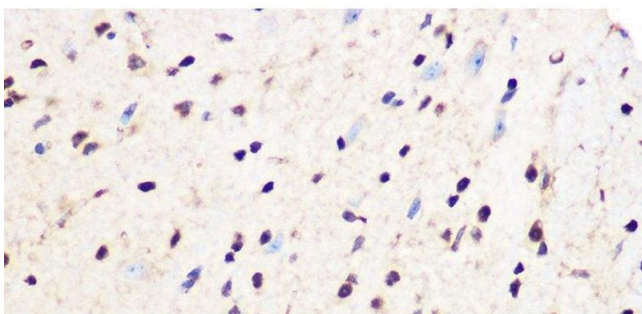
Preservative: Sodium azide

Precaution of Use: This product contains Sodium azide: a POISONOUS AND HAZARDOUS SUBSTANCE which should be handled by trained staff only.

Storage: -20 °C

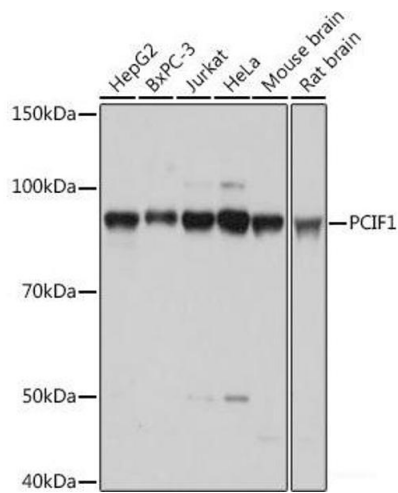
Storage Comment: Store at -20°C. Avoid freeze / thaw cycles.

## Images



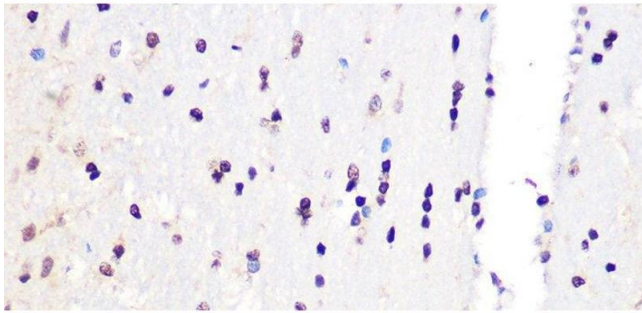
### Immunohistochemistry (Paraffin-embedded Sections)

**Image 1.** Immunohistochemistry of paraffin-embedded Mouse spinal cord using PCIF1 Polyclonal Antibody at dilution of 1:100 (40x lens).



### Western Blotting

**Image 2.** Western blot analysis of extracts of various cell lines using PCIF1 Polyclonal Antibody at dilution of 1:1000.



### Immunohistochemistry (Paraffin-embedded Sections)

**Image 3.** Immunohistochemistry of paraffin-embedded Rat brain using PCIF1 Polyclonal Antibody at dilution of 1:100 (40x lens).