

Datasheet for ABIN7259847

## anti-CD47 antibody

### 4 Images



[Go to Product page](#)

### Overview

Quantity:	200 µL
Target:	CD47
Reactivity:	Human, Mouse, Rat
Host:	Rabbit
Clonality:	Polyclonal
Conjugate:	This CD47 antibody is un-conjugated
Application:	Immunofluorescence (IF), Immunohistochemistry (IHC)

### Product Details

Immunogen:	Recombinant fusion protein of human CD47 (NP_942088.1).
Isotype:	IgG
Characteristics:	Polyclonal Antibody
Purification:	Affinity purification

### Target Details

Target:	CD47
Alternative Name:	CD47 ( <a href="#">CD47 Products</a> )
Background:	This gene encodes a membrane protein, which is involved in the increase in intracellular calcium concentration that occurs upon cell adhesion to extracellular matrix. The encoded protein is also a receptor for the C-terminal cell binding domain of thrombospondin, and it may play a role in membrane transport and signal transduction. This gene has broad tissue

## Target Details

distribution, and is reduced in expression on Rh erythrocytes. Alternatively spliced transcript variants have been found for this gene.

Gene ID: 961

UniProt: [Q08722](#)

## Application Details

Application Notes: IHC 1:50-1:200 IF 1:50-1:200

Restrictions: For Research Use only

## Handling

Format: Liquid

Concentration: 1 mg/mL

Buffer: PBS with 0.02 % sodium azide, 50 % glycerol, pH 7.3

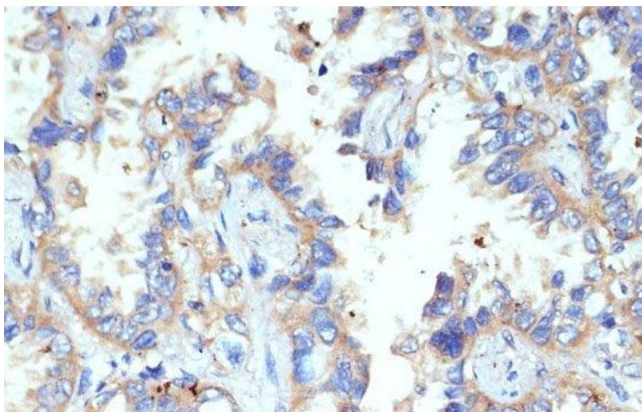
Preservative: Sodium azide

Precaution of Use: This product contains Sodium azide: a POISONOUS AND HAZARDOUS SUBSTANCE which should be handled by trained staff only.

Storage: -20 °C

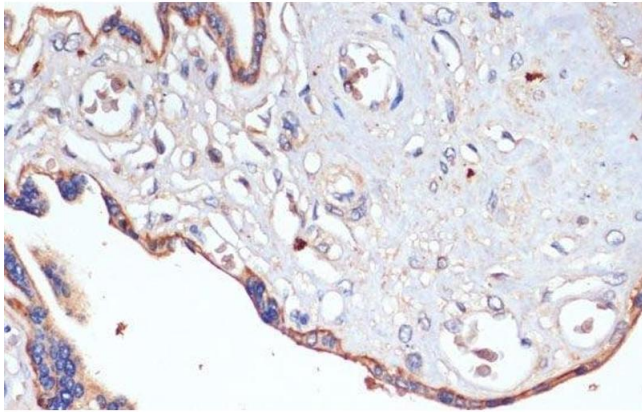
Storage Comment: Store at -20°C. Avoid freeze / thaw cycles.

## Images



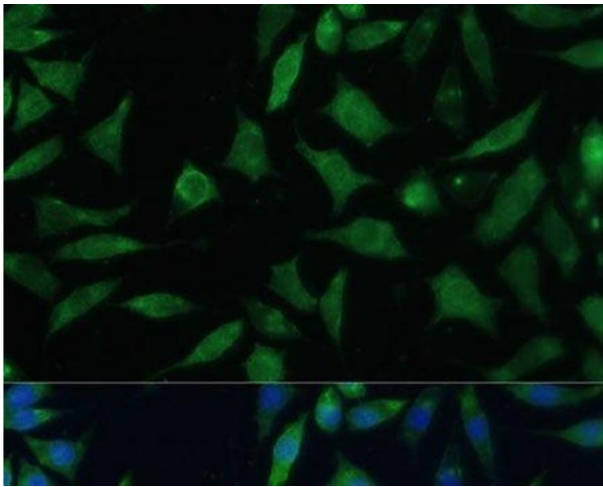
### Immunohistochemistry (Paraffin-embedded Sections)

**Image 1.** Immunohistochemistry of paraffin-embedded Human lung cancer using CD47 Polyclonal Antibody at dilution of 1:200 (40x lens).



### Immunohistochemistry (Paraffin-embedded Sections)

**Image 2.** Immunohistochemistry of paraffin-embedded Human placenta using CD47 Polyclonal Antibody at dilution of 1:200 (40x lens).



### Immunofluorescence

**Image 3.** Immunofluorescence analysis of L929 cells using CD47 Polyclonal Antibody at dilution of 1:100. Blue: DAPI for nuclear staining.

Please check the [product details page](#) for more images. Overall 4 images are available for ABIN7259847.