

Datasheet for ABIN7259869

**anti-HSPA1L antibody****2** Images[Go to Product page](#)

## Overview

Quantity:	200 µL
Target:	HSPA1L
Reactivity:	Human, Mouse
Host:	Rabbit
Clonality:	Polyclonal
Conjugate:	This HSPA1L antibody is un-conjugated
Application:	Western Blotting (WB), Immunofluorescence (IF)

## Product Details

Immunogen:	Recombinant fusion protein of human HSPA1L (NP_005518.3).
Isotype:	IgG
Characteristics:	Polyclonal Antibody
Purification:	Affinity purification

## Target Details

Target:	HSPA1L
Alternative Name:	HSPA1L ( <a href="#">HSPA1L Products</a> )
Background:	This gene encodes a 70 kDa heat shock protein. In conjunction with other heat shock proteins, this protein stabilizes existing proteins against aggregation and mediates the folding of newly translated proteins in the cytosol and in organelles. The gene is located in the major histocompatibility complex class III region, in a cluster with two closely related genes which

## Target Details

also encode isoforms of the 70 kDa heat shock protein.

Molecular Weight: Observed\_MW: 67 kDa  
Calculated\_MW: 70 kDa

Gene ID: 3305

UniProt: [P34931](#)

## Application Details

Application Notes: WB 1:500-1:2000 IF 1:50-1:200

Restrictions: For Research Use only

## Handling

Format: Liquid

Concentration: 1 mg/mL

Buffer: PBS with 0.02 % sodium azide, 50 % glycerol, pH 7.3

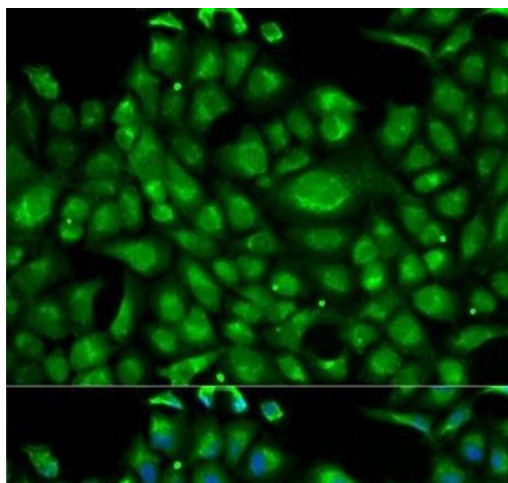
Preservative: Sodium azide

Precaution of Use: This product contains Sodium azide: a POISONOUS AND HAZARDOUS SUBSTANCE which should be handled by trained staff only.

Storage: -20 °C

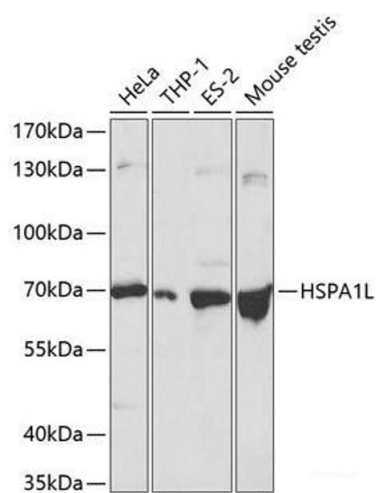
Storage Comment: Store at -20°C. Avoid freeze / thaw cycles.

## Images



### Immunofluorescence

**Image 1.** Immunofluorescence analysis of U2OS cells using HSPA1L Polyclonal Antibody



Western Blotting

**Image 2.** Western blot analysis of extracts of various cell lines using HSPA1L Polyclonal Antibody at dilution of 1:500.