



[Go to Product page](#)

Datasheet for ABIN7259877
anti-POLR2D antibody

2 Images

Overview

| | |
|--------------|--|
| Quantity: | 200 µL |
| Target: | POLR2D |
| Reactivity: | Human, Mouse |
| Host: | Rabbit |
| Clonality: | Polyclonal |
| Conjugate: | This POLR2D antibody is un-conjugated |
| Application: | Western Blotting (WB), Immunofluorescence (IF) |

Product Details

| | |
|------------------|---|
| Immunogen: | Recombinant fusion protein of human POLR2D (NP_004796.1). |
| Isotype: | IgG |
| Characteristics: | Polyclonal Antibody |
| Purification: | Affinity purification |

Target Details

| | |
|-------------------|---|
| Target: | POLR2D |
| Alternative Name: | POLR2D (POLR2D Products) |
| Background: | This gene encodes the fourth largest subunit of RNA polymerase II, the polymerase responsible for synthesizing messenger RNA in eukaryotes. In yeast, this polymerase subunit is associated with the polymerase under suboptimal growth conditions and may have a stress protective role. A sequence for a ribosomal pseudogene is contained within the 3' untranslated region of |

Target Details

the transcript from this gene.

Molecular Weight: Observed_MW: 17 kDa
Calculated_MW: 16 kDa

Gene ID: 5433

UniProt: [O15514](#)

Pathways: [Regulatory RNA Pathways](#)

Application Details

Application Notes: WB 1:500-1:2000 IF 1:10-1:100

Restrictions: For Research Use only

Handling

Format: Liquid

Concentration: 1 mg/mL

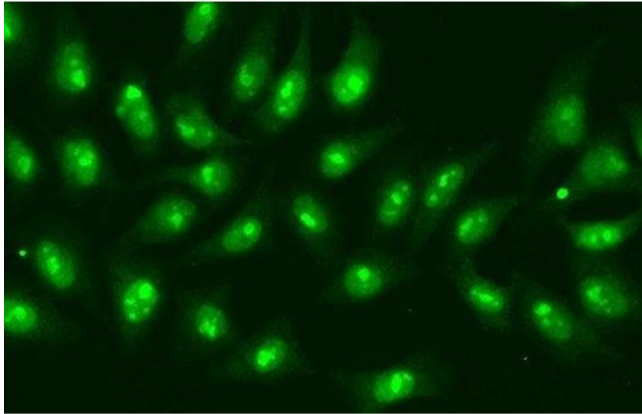
Buffer: PBS with 0.02 % sodium azide, 50 % glycerol, pH 7.3

Preservative: Sodium azide

Precaution of Use: This product contains Sodium azide: a POISONOUS AND HAZARDOUS SUBSTANCE which should be handled by trained staff only.

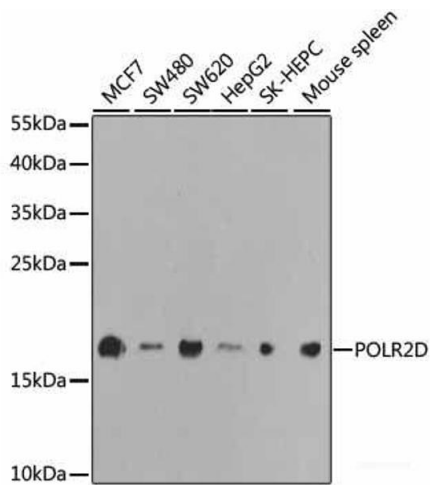
Storage: -20 °C

Storage Comment: Store at -20°C. Avoid freeze / thaw cycles.



Immunofluorescence

Image 1. Immunofluorescence analysis of A549 cells using POLR2D Polyclonal Antibody



Western Blotting

Image 2. Western blot analysis of extracts of various cell lines using POLR2D Polyclonal Antibody at dilution of 1:1000.