

Datasheet for ABIN7259889

**anti-GNB1 antibody****1** Image[Go to Product page](#)

## Overview

Quantity:	200 µL
Target:	GNB1
Reactivity:	Human, Mouse
Host:	Rabbit
Clonality:	Polyclonal
Conjugate:	This GNB1 antibody is un-conjugated
Application:	Western Blotting (WB)

## Product Details

Immunogen:	Recombinant fusion protein of human GNB1 (NP_002065.1).
Isotype:	IgG
Characteristics:	Polyclonal Antibody
Purification:	Affinity purification

## Target Details

Target:	GNB1
Alternative Name:	GNB1 ( <a href="#">GNB1 Products</a> )
Background:	Heterotrimeric guanine nucleotide-binding proteins (G proteins), which integrate signals between receptors and effector proteins, are composed of an alpha, a beta, and a gamma subunit. These subunits are encoded by families of related genes. This gene encodes a beta subunit. Beta subunits are important regulators of alpha subunits, as well as of certain signal

## Target Details

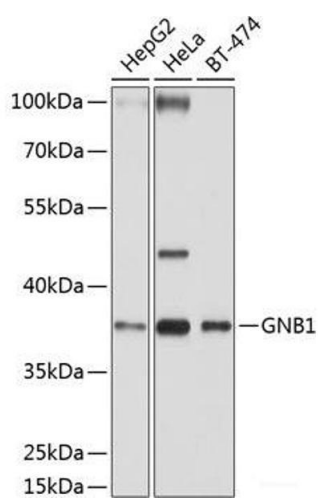
	transduction receptors and effectors. Alternative splicing results in multiple transcript variants.
Molecular Weight:	Observed_MW: 37 kDa Calculated_MW: 36 kDa/37 kDa
Gene ID:	2782
UniProt:	<a href="#">P62873</a>
Pathways:	<a href="#">Myometrial Relaxation and Contraction</a> , <a href="#">Regulation of G-Protein Coupled Receptor Protein Signaling</a> , <a href="#">CXCR4-mediated Signaling Events</a> , <a href="#">Phototransduction</a> , <a href="#">Thromboxane A2 Receptor Signaling</a> , <a href="#">SARS-CoV-2 Protein Interactome</a>

## Application Details

Application Notes:	WB 1:1000-1:4000
Restrictions:	For Research Use only

## Handling

Format:	Liquid
Concentration:	1 mg/mL
Buffer:	PBS with 0.02 % sodium azide, 50 % glycerol, pH 7.3
Preservative:	Sodium azide
Precaution of Use:	This product contains Sodium azide: a POISONOUS AND HAZARDOUS SUBSTANCE which should be handled by trained staff only.
Storage:	-20 °C
Storage Comment:	Store at -20°C. Avoid freeze / thaw cycles.



Western Blotting

**Image 1.** Western blot analysis of extracts of various cell lines using GNB1 Polyclonal Antibody at dilution of 1:1000.