

Datasheet for ABIN7259941

**anti-DLC1 antibody****1** Image[Go to Product page](#)

## Overview

Quantity:	200 µL
Target:	DLC1
Reactivity:	Mouse, Rat
Host:	Rabbit
Clonality:	Polyclonal
Conjugate:	This DLC1 antibody is un-conjugated
Application:	Immunohistochemistry (IHC)

## Product Details

Immunogen:	Recombinant fusion protein of human DLC1 (NP_079043.3).
Isotype:	IgG
Characteristics:	Polyclonal Antibody
Purification:	Affinity purification

## Target Details

Target:	DLC1
Alternative Name:	DLC1 ( <a href="#">DLC1 Products</a> )
Background:	<p>This gene encodes a GTPase-activating protein (GAP) that is a member of the rhoGAP family of proteins which play a role in the regulation of small GTP-binding proteins. GAP family proteins participate in signaling pathways that regulate cell processes involved in cytoskeletal changes.</p> <p>This gene functions as a tumor suppressor gene in a number of common cancers, including</p>

## Target Details

prostate, lung, colorectal, and breast cancers. Multiple transcript variants due to alternative promoters and alternative splicing have been found for this gene.

Gene ID: 10395

UniProt: [Q96QB1](#)

Pathways: [Tube Formation, Positive Regulation of Endopeptidase Activity](#)

## Application Details

Application Notes: IHC 1:50-1:200

Restrictions: For Research Use only

## Handling

Format: Liquid

Concentration: 1 mg/mL

Buffer: PBS with 0.02 % sodium azide, 50 % glycerol, pH 7.3

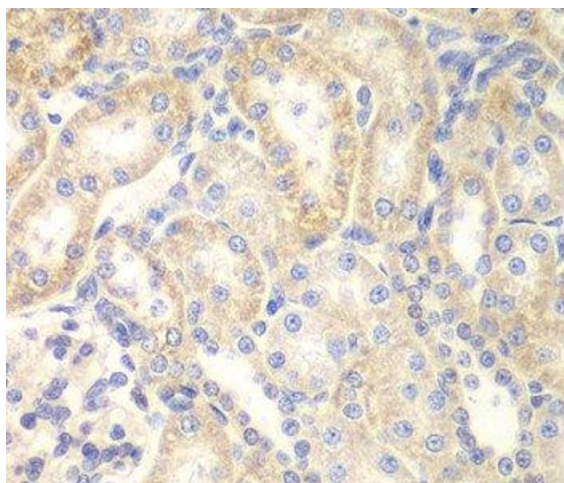
Preservative: Sodium azide

Precaution of Use: This product contains Sodium azide: a POISONOUS AND HAZARDOUS SUBSTANCE which should be handled by trained staff only.

Storage: -20 °C

Storage Comment: Store at -20°C. Avoid freeze / thaw cycles.

## Images



### Immunohistochemistry (Paraffin-embedded Sections)

**Image 1.** Immunohistochemistry of paraffin-embedded Rat kidney using DLC1 Polyclonal Antibody at dilution of 1:200 (40x lens).