

Datasheet for ABIN7260003

anti-TAPBP antibody

4 Images

[Go to Product page](#)

Overview

| | |
|--------------|---|
| Quantity: | 200 µL |
| Target: | TAPBP |
| Reactivity: | Human, Mouse, Rat |
| Host: | Rabbit |
| Clonality: | Polyclonal |
| Conjugate: | This TAPBP antibody is un-conjugated |
| Application: | Western Blotting (WB), Immunohistochemistry (IHC) |

Product Details

| | |
|------------------|--|
| Immunogen: | Recombinant fusion protein of human TAPBP (NP_757345.2). |
| Isotype: | IgG |
| Characteristics: | Polyclonal Antibody |
| Purification: | Affinity purification |

Target Details

| | |
|-------------------|---|
| Target: | TAPBP |
| Alternative Name: | TAPBP (TAPBP Products) |
| Background: | This gene encodes a transmembrane glycoprotein which mediates interaction between newly assembled major histocompatibility complex (MHC) class I molecules and the transporter associated with antigen processing (TAP), which is required for the transport of antigenic peptides across the endoplasmic reticulum membrane. This interaction is essential for optimal |

Target Details

peptide loading on the MHC class I molecule. Up to four complexes of MHC class I and this protein may be bound to a single TAP molecule. This protein contains a C-terminal double-lysine motif (KKKAE) known to maintain membrane proteins in the endoplasmic reticulum. This gene lies within the major histocompatibility complex on chromosome 6. Alternative splicing results in three transcript variants encoding different isoforms.

| | |
|-------------------|---|
| Molecular Weight: | Observed_MW: 48 kDa Calculated_MW: 38 kDa/43 kDa/47 kDa/53 kDa |
|-------------------|---|

| | |
|----------|------|
| Gene ID: | 6892 |
|----------|------|

| | |
|----------|------------------------|
| UniProt: | O15533 |
|----------|------------------------|

Application Details

| | |
|--------------------|--------------------------------|
| Application Notes: | WB 1:500-1:2000 IHC 1:50-1:100 |
|--------------------|--------------------------------|

| | |
|---------------|-----------------------|
| Restrictions: | For Research Use only |
|---------------|-----------------------|

Handling

| | |
|---------|--------|
| Format: | Liquid |
|---------|--------|

| | |
|----------------|---------|
| Concentration: | 1 mg/mL |
|----------------|---------|

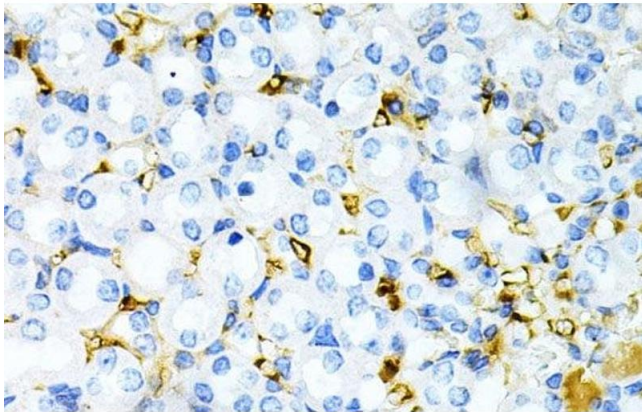
| | |
|---------|---|
| Buffer: | PBS with 0.02 % sodium azide, 50 % glycerol, pH 7.3 |
|---------|---|

| | |
|---------------|--------------|
| Preservative: | Sodium azide |
|---------------|--------------|

| | |
|--------------------|--|
| Precaution of Use: | This product contains Sodium azide: a POISONOUS AND HAZARDOUS SUBSTANCE which should be handled by trained staff only. |
|--------------------|--|

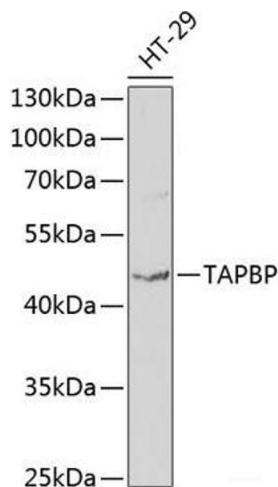
| | |
|----------|--------|
| Storage: | -20 °C |
|----------|--------|

| | |
|------------------|---|
| Storage Comment: | Store at -20°C. Avoid freeze / thaw cycles. |
|------------------|---|



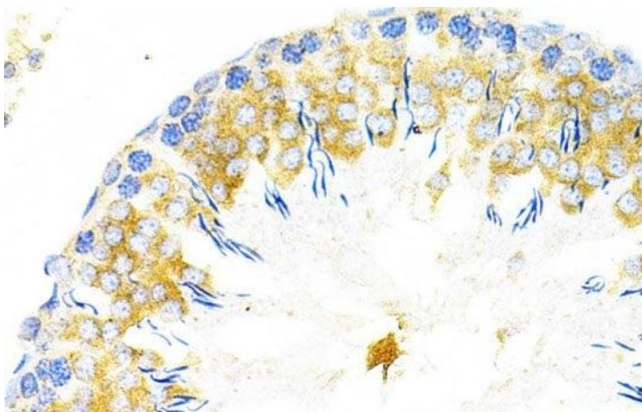
Immunohistochemistry (Paraffin-embedded Sections)

Image 1. Immunohistochemistry of paraffin-embedded Mouse kidney using TAPBP Polyclonal Antibody at dilution of 1:200 (40x lens).



Western Blotting

Image 2. Western blot analysis of extracts of HT-29 cells using TAPBP Polyclonal Antibody at dilution of 1:1000.



Immunohistochemistry (Paraffin-embedded Sections)

Image 3. Immunohistochemistry of paraffin-embedded Rat testis using TAPBP Polyclonal Antibody at dilution of 1:200 (40x lens).

Please check the [product details page](#) for more images. Overall 4 images are available for ABIN7260003.