

Datasheet for ABIN7260041

anti-PSMD2 antibody

4 Images

[Go to Product page](#)

Overview

Quantity:	200 µL
Target:	PSMD2
Reactivity:	Human, Mouse
Host:	Rabbit
Clonality:	Polyclonal
Conjugate:	This PSMD2 antibody is un-conjugated
Application:	Western Blotting (WB), Immunofluorescence (IF), Immunohistochemistry (IHC)

Product Details

Immunogen:	Recombinant fusion protein of human PSMD2 (NP_002799.3).
Isotype:	IgG
Characteristics:	Polyclonal Antibody
Purification:	Affinity purification

Target Details

Target:	PSMD2
Alternative Name:	PSMD2 (PSMD2 Products)
Background:	The 26S proteasome is a multicatalytic proteinase complex with a highly ordered structure composed of 2 complexes, a 20S core and a 19S regulator. The 20S core is composed of 4 rings of 28 non-identical subunits, 2 rings are composed of 7 alpha subunits and 2 rings are composed of 7 beta subunits. The 19S regulator is composed of a base, which contains 6

Target Details

ATPase subunits and 2 non-ATPase subunits, and a lid, which contains up to 10 non-ATPase subunits. Proteasomes are distributed throughout eukaryotic cells at a high concentration and cleave peptides in an ATP/ubiquitin-dependent process in a non-lysosomal pathway. An essential function of a modified proteasome, the immunoproteasome, is the processing of class I MHC peptides. This gene encodes one of the non-ATPase subunits of the 19S regulator lid. In addition to participation in proteasome function, this subunit may also participate in the TNF signalling pathway since it interacts with the tumor necrosis factor type 1 receptor. A pseudogene has been identified on chromosome 1. Alternative splicing results in multiple transcript variants of this gene.

Molecular Weight: Observed_MW: 108 kDa
Calculated_MW: 82 kDa/85 kDa/100 kDa

Gene ID: 5708

UniProt: [Q13200](#)

Pathways: [Mitotic G1-G1/S Phases](#), [DNA Replication](#), [Synthesis of DNA](#), [Ubiquitin Proteasome Pathway](#)

Application Details

Application Notes: WB 1:500-1:2000 IHC 1:50-1:200 IF 1:50-1:200

Restrictions: For Research Use only

Handling

Format: Liquid

Concentration: 1 mg/mL

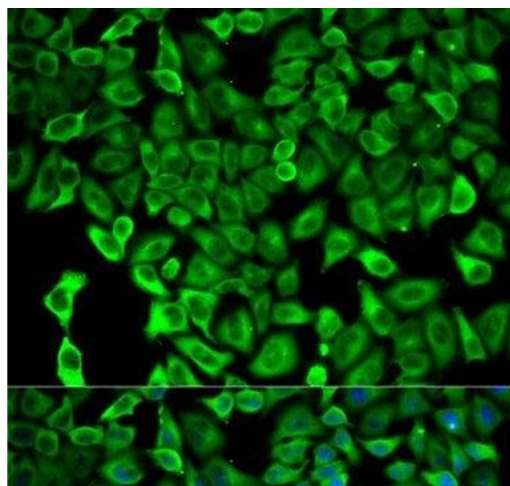
Buffer: PBS with 0.02 % sodium azide, 50 % glycerol, pH 7.3

Preservative: Sodium azide

Precaution of Use: This product contains Sodium azide: a POISONOUS AND HAZARDOUS SUBSTANCE which should be handled by trained staff only.

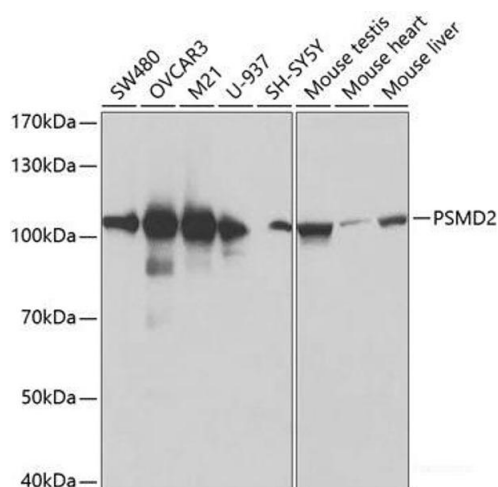
Storage: -20 °C

Storage Comment: Store at -20°C. Avoid freeze / thaw cycles.



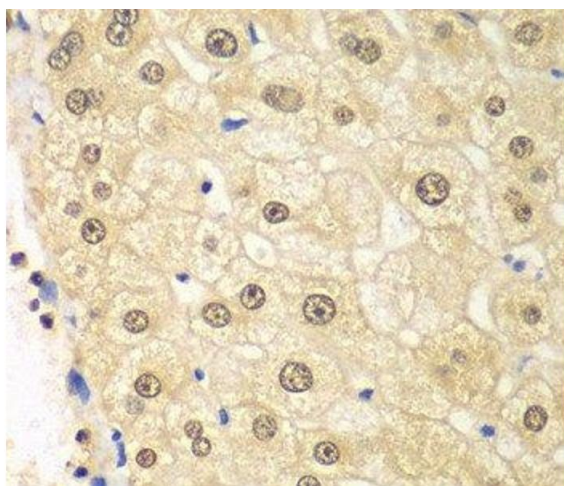
Immunofluorescence

Image 1. Immunofluorescence analysis of HeLa cells using PSMD2 Polyclonal Antibody



Western Blotting

Image 2. Western blot analysis of extracts of various cell lines using PSMD2 Polyclonal Antibody at dilution of 1:600.



Immunohistochemistry (Paraffin-embedded Sections)

Image 3. Immunohistochemistry of paraffin-embedded Human liver tissue using PSMD2 Polyclonal Antibody at dilution of 1:100 (40x lens).

Please check the [product details page](#) for more images. Overall 4 images are available for ABIN7260041.