



[Go to Product page](#)

Datasheet for ABIN7260043  
**anti-SMARCA5 antibody**

2 Images

Overview

Quantity:	200 µL
Target:	SMARCA5
Reactivity:	Human, Mouse
Host:	Rabbit
Clonality:	Polyclonal
Conjugate:	This SMARCA5 antibody is un-conjugated
Application:	Western Blotting (WB), Immunofluorescence (IF)

Product Details

Immunogen:	Recombinant fusion protein of human SMARCA5 (NP_003592.3).
Isotype:	IgG
Characteristics:	Polyclonal Antibody
Purification:	Affinity purification

Target Details

Target:	SMARCA5
Alternative Name:	SMARCA5 ( <a href="#">SMARCA5 Products</a> )
Background:	The protein encoded by this gene is a member of the SWI/SNF family of proteins. Members of this family have helicase and ATPase activities and are thought to regulate transcription of certain genes by altering the chromatin structure around those genes. The protein encoded by this gene is a component of the chromatin remodeling and spacing factor RSF, a facilitator of

## Target Details

---

the transcription of class II genes by RNA polymerase II. The encoded protein is similar in sequence to the Drosophila ISWI chromatin remodeling protein.

Molecular Weight: Observed\_MW: 125 kDa  
Calculated\_MW: 121 kDa

Gene ID: 8467

UniProt: [O60264](#)

Pathways: [Chromatin Binding](#)

## Application Details

---

Application Notes: WB 1:500-1:2000 IF 1:50-1:200

Restrictions: For Research Use only

## Handling

---

Format: Liquid

Concentration: 1 mg/mL

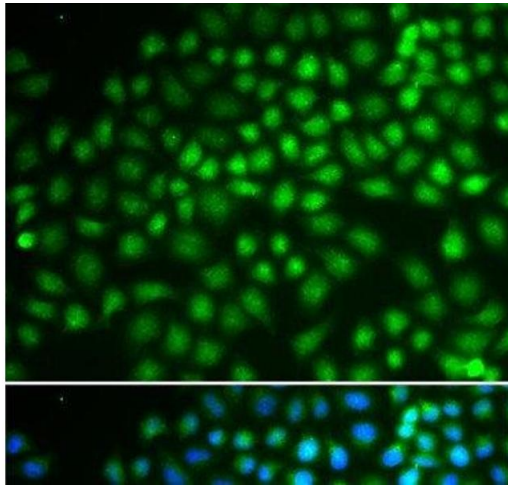
Buffer: PBS with 0.02 % sodium azide, 50 % glycerol, pH 7.3

Preservative: Sodium azide

Precaution of Use: This product contains Sodium azide: a POISONOUS AND HAZARDOUS SUBSTANCE which should be handled by trained staff only.

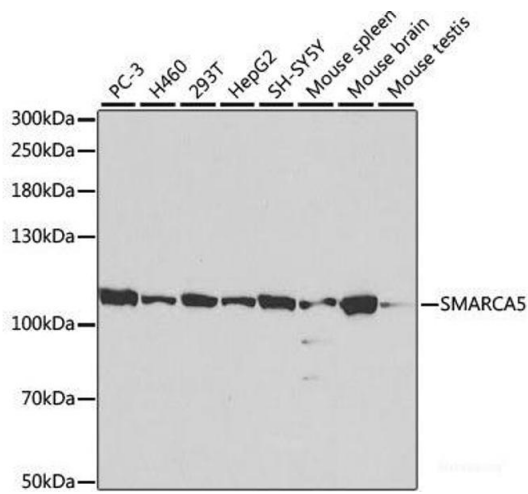
Storage: -20 °C

Storage Comment: Store at -20°C. Avoid freeze / thaw cycles.



### Immunofluorescence

**Image 1.** Immunofluorescence analysis of HeLa cells using SMARCA5 Polyclonal Antibody



### Western Blotting

**Image 2.** Western blot analysis of extracts of various cell lines using SMARCA5 Polyclonal Antibody at dilution of 1:1000.