

Datasheet for ABIN7260049

**anti-IGFBP4 antibody**

5 Images

[Go to Product page](#)

## Overview

Quantity:	200 µL
Target:	IGFBP4
Reactivity:	Human, Mouse, Rat
Host:	Rabbit
Clonality:	Polyclonal
Conjugate:	This IGFBP4 antibody is un-conjugated
Application:	Western Blotting (WB), Immunohistochemistry (IHC), Immunofluorescence (IF)

## Product Details

Immunogen:	Recombinant fusion protein of human IGFBP4 (NP_001543.2).
Isotype:	IgG
Characteristics:	Polyclonal Antibody
Purification:	Affinity purification

## Target Details

Target:	IGFBP4
Alternative Name:	IGFBP4 ( <a href="#">IGFBP4 Products</a> )
Background:	This gene is a member of the insulin-like growth factor binding protein (IGFBP) family and encodes a protein with an IGFBP domain and a thyroglobulin type-I domain. The protein binds both insulin-like growth factors (IGFs) I and II and circulates in the plasma in both glycosylated and non-glycosylated forms. Binding of this protein prolongs the half-life of the IGFs and alters

## Target Details

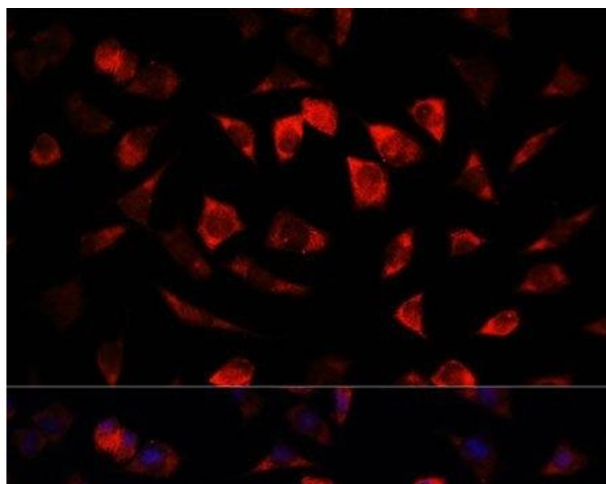
	their interaction with cell surface receptors.
Molecular Weight:	Observed_MW: 17 kDa Calculated_MW: 17 kDa/27 kDa
Gene ID:	3487
UniProt:	<a href="#">P22692</a>
Pathways:	<a href="#">WNT Signaling</a> , <a href="#">Myometrial Relaxation and Contraction</a> , <a href="#">Regulation of Carbohydrate Metabolic Process</a>

## Application Details

Application Notes:	WB 1:500-1:2000 IHC 1:50-1:100 IF 1:50-1:200
Restrictions:	For Research Use only

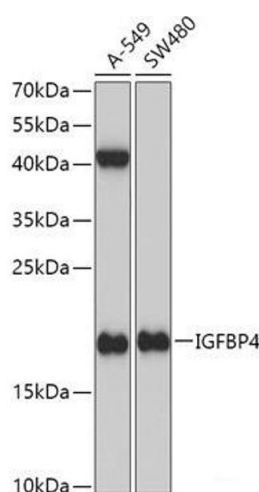
## Handling

Format:	Liquid
Concentration:	1 mg/mL
Buffer:	PBS with 0.02 % sodium azide, 50 % glycerol, pH 7.3
Preservative:	Sodium azide
Precaution of Use:	This product contains Sodium azide: a POISONOUS AND HAZARDOUS SUBSTANCE which should be handled by trained staff only.
Storage:	-20 °C
Storage Comment:	Store at -20°C. Avoid freeze / thaw cycles.



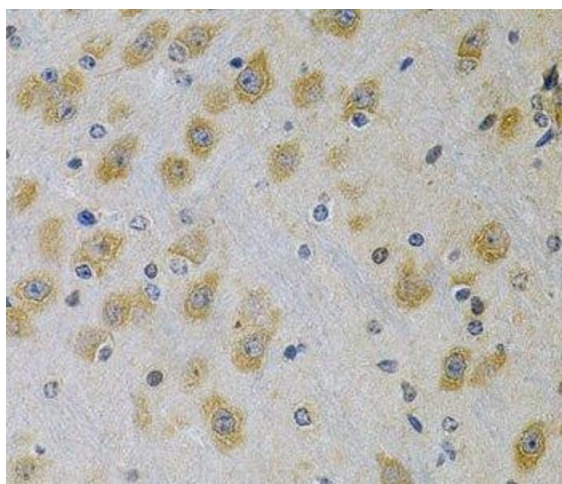
### Immunofluorescence

**Image 1.** Immunofluorescence analysis of L929 cells using IGFBP4 Polyclonal Antibody at dilution of 1:100. Blue: DAPI for nuclear staining.



### Western Blotting

**Image 2.** Western blot analysis of extracts of various cell lines using IGFBP4 Polyclonal Antibody at dilution of 1:1000.



### Immunohistochemistry (Paraffin-embedded Sections)

**Image 3.** Immunohistochemistry of paraffin-embedded Rat brain using IGFBP4 Polyclonal Antibody at dilution of 1:100 (40x lens).

Please check the [product details page](#) for more images. Overall 5 images are available for ABIN7260049.