

Datasheet for ABIN7260065

anti-RPS19 antibody[Go to Product page](#)**1** Image

Overview

Quantity:	200 µL
Target:	RPS19
Reactivity:	Human
Host:	Rabbit
Clonality:	Polyclonal
Conjugate:	This RPS19 antibody is un-conjugated
Application:	Western Blotting (WB)

Product Details

Immunogen:	Recombinant fusion protein of human RPS19 (NP_001013.1).
Isotype:	IgG
Characteristics:	Polyclonal Antibody
Purification:	Affinity purification

Target Details

Target:	RPS19
Alternative Name:	RPS19 (RPS19 Products)
Background:	Ribosomes, the organelles that catalyze protein synthesis, consist of a small 40S subunit and a large 60S subunit. Together these subunits are composed of 4 RNA species and approximately 80 structurally distinct proteins. This gene encodes a ribosomal protein that is a component of the 40S subunit. The protein belongs to the S19E family of ribosomal proteins. It is located in

Target Details

the cytoplasm. Mutations in this gene cause Diamond-Blackfan anemia (DBA), a constitutional erythroblastopenia characterized by absent or decreased erythroid precursors, in a subset of patients. This suggests a possible extra-ribosomal function for this gene in erythropoietic differentiation and proliferation, in addition to its ribosomal function. Higher expression levels of this gene in some primary colon carcinomas compared to matched normal colon tissues has been observed. As is typical for genes encoding ribosomal proteins, there are multiple processed pseudogenes of this gene dispersed through the genome.

Molecular Weight: Observed_MW: 16 kDa
Calculated_MW: 16 kDa

Gene ID: 6223

UniProt: [P39019](#)

Pathways: [Positive Regulation of Immune Effector Process](#), [Ribonucleoprotein Complex Subunit Organization](#), [Ribosome Assembly](#)

Application Details

Application Notes: WB 1:500-1:2000

Restrictions: For Research Use only

Handling

Format: Liquid

Concentration: 1 mg/mL

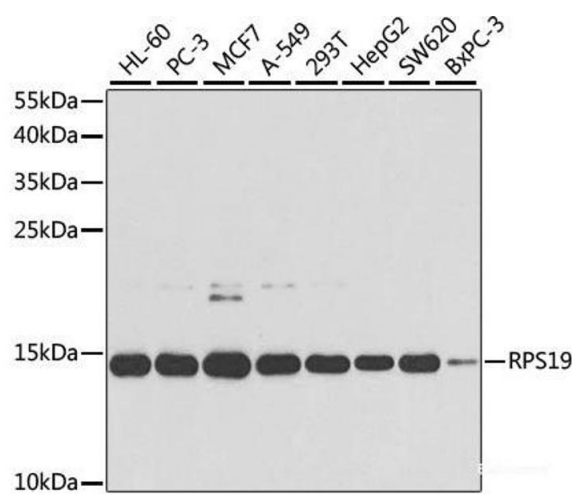
Buffer: PBS with 0.02 % sodium azide, 50 % glycerol, pH 7.3

Preservative: Sodium azide

Precaution of Use: This product contains Sodium azide: a POISONOUS AND HAZARDOUS SUBSTANCE which should be handled by trained staff only.

Storage: -20 °C

Storage Comment: Store at -20°C. Avoid freeze / thaw cycles.



Western Blotting

Image 1. Western blot analysis of extracts of various cell lines using RPS19 Polyclonal Antibody at dilution of 1:1000.