

Datasheet for ABIN7260085

anti-PCK1 antibody[Go to Product page](#)**1** Image

Overview

Quantity:	200 µL
Target:	PCK1
Reactivity:	Mouse, Rat
Host:	Rabbit
Clonality:	Polyclonal
Conjugate:	This PCK1 antibody is un-conjugated
Application:	Western Blotting (WB)

Product Details

Immunogen:	A synthetic peptide of human PCK1 (NP_002582.3).
Isotype:	IgG
Characteristics:	Polyclonal Antibody
Purification:	Affinity purification

Target Details

Target:	PCK1
Alternative Name:	PCK1 (PCK1 Products)
Background:	This gene is a main control point for the regulation of gluconeogenesis. The cytosolic enzyme encoded by this gene, along with GTP, catalyzes the formation of phosphoenolpyruvate from oxaloacetate, with the release of carbon dioxide and GDP. The expression of this gene can be regulated by insulin, glucocorticoids, glucagon, cAMP, and diet. Defects in this gene are a cause

Target Details

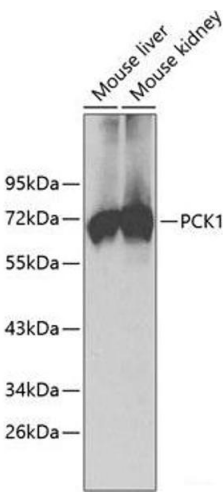
	of cytosolic phosphoenolpyruvate carboxykinase deficiency. A mitochondrial isozyme of the encoded protein also has been characterized.
Molecular Weight:	Observed_MW: 69 kDa Calculated_MW: 34 kDa/69 kDa
Gene ID:	5105
UniProt:	P35558
Pathways:	Positive Regulation of Peptide Hormone Secretion, Carbohydrate Homeostasis

Application Details

Application Notes:	WB 1:1000-1:2000
Restrictions:	For Research Use only

Handling

Format:	Liquid
Concentration:	1 mg/mL
Buffer:	PBS with 0.02 % sodium azide, 50 % glycerol, pH 7.3
Preservative:	Sodium azide
Precaution of Use:	This product contains Sodium azide: a POISONOUS AND HAZARDOUS SUBSTANCE which should be handled by trained staff only.
Storage:	-20 °C
Storage Comment:	Store at -20°C. Avoid freeze / thaw cycles.



Western Blotting

Image 1. Western blot analysis of extracts of various cell lines using PCK1 Polyclonal Antibody.