

Datasheet for ABIN7260149

**anti-IL1RN antibody****2** Images[Go to Product page](#)

## Overview

Quantity:	200 µL
Target:	IL1RN
Reactivity:	Human, Mouse
Host:	Rabbit
Clonality:	Polyclonal
Conjugate:	This IL1RN antibody is un-conjugated
Application:	Western Blotting (WB), Immunofluorescence (IF)

## Product Details

Immunogen:	Recombinant fusion protein of human IL1RN (NP_000568.1).
Isotype:	IgG
Characteristics:	Polyclonal Antibody
Purification:	Affinity purification

## Target Details

Target:	IL1RN
Alternative Name:	IL1RN ( <a href="#">IL1RN Products</a> )
Background:	The protein encoded by this gene is a member of the interleukin 1 cytokine family. This protein inhibits the activities of interleukin 1, alpha (IL1A) and interleukin 1, beta (IL1B), and modulates a variety of interleukin 1 related immune and inflammatory responses. This gene and five other closely related cytokine genes form a gene cluster spanning approximately 400 kb on

## Target Details

chromosome 2. A polymorphism of this gene is reported to be associated with increased risk of osteoporotic fractures and gastric cancer. Several alternatively spliced transcript variants encoding distinct isoforms have been reported.

Molecular Weight: Observed\_MW: 23 kDa  
Calculated\_MW: 16 kDa/17 kDa/19 kDa/20 kDa

Gene ID: 3557

UniProt: [P18510](#)

Pathways: [NF-kappaB Signaling](#), [Hormone Transport](#), [Cancer Immune Checkpoints](#)

## Application Details

Application Notes: WB 1:500-1:2000 IF 1:50-1:200

Restrictions: For Research Use only

## Handling

Format: Liquid

Concentration: 1 mg/mL

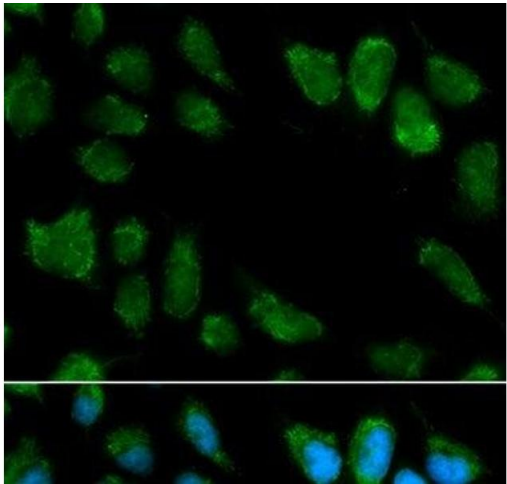
Buffer: PBS with 0.02 % sodium azide, 50 % glycerol, pH 7.3

Preservative: Sodium azide

Precaution of Use: This product contains Sodium azide: a POISONOUS AND HAZARDOUS SUBSTANCE which should be handled by trained staff only.

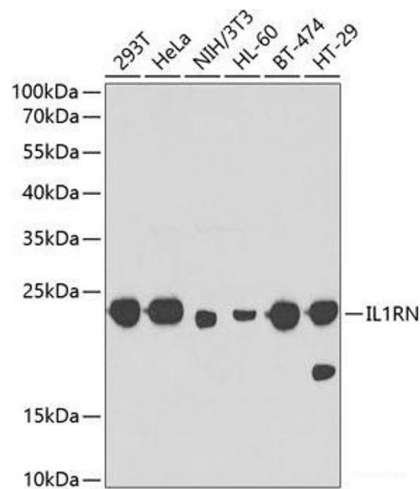
Storage: -20 °C

Storage Comment: Store at -20°C. Avoid freeze / thaw cycles.



Immunofluorescence

**Image 1.** Immunofluorescence analysis of MCF-7 cells using IL1RN Polyclonal Antibody



Western Blotting

**Image 2.** Western blot analysis of extracts of various cell lines using IL1RN Polyclonal Antibody at dilution of 1:1000.