

Datasheet for ABIN7260155

anti-CD51 antibody

2 Images

[Go to Product page](#)

Overview

Quantity:	200 µL
Target:	CD51 (ITGAV)
Reactivity:	Human, Mouse, Rat
Host:	Rabbit
Clonality:	Polyclonal
Conjugate:	This CD51 antibody is un-conjugated
Application:	Immunohistochemistry (IHC)

Product Details

Immunogen:	A synthetic peptide of human ITGAV (NP_002201.1).
Isotype:	IgG
Characteristics:	Polyclonal Antibody
Purification:	Affinity purification

Target Details

Target:	CD51 (ITGAV)
Alternative Name:	ITGAV (ITGAV Products)
Background:	The product of this gene belongs to the integrin alpha chain family. Integrins are heterodimeric integral membrane proteins composed of an alpha subunit and a beta subunit that function in cell surface adhesion and signaling. The encoded preproprotein is proteolytically processed to generate light and heavy chains that comprise the alpha V subunit. This subunit associates with

Target Details

beta 1, beta 3, beta 5, beta 6 and beta 8 subunits. The heterodimer consisting of alpha V and beta 3 subunits is also known as the vitronectin receptor. This integrin may regulate angiogenesis and cancer progression. Alternative splicing results in multiple transcript variants. Note that the integrin alpha 5 and integrin alpha V subunits are encoded by distinct genes.

Gene ID: 3685

UniProt: [P06756](#)

Pathways: [Cell-Cell Junction Organization](#), [Signaling Events mediated by VEGFR1 and VEGFR2](#), [Growth Factor Binding](#), [Integrin Complex](#)

Application Details

Application Notes: IHC 1:50-1:200

Restrictions: For Research Use only

Handling

Format: Liquid

Concentration: 1 mg/mL

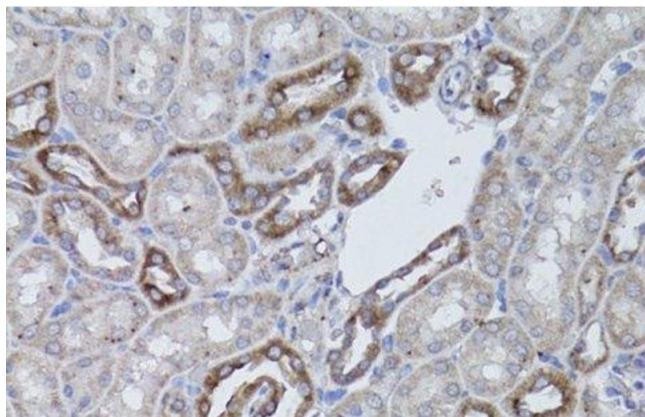
Buffer: PBS with 0.02 % sodium azide, 50 % glycerol, pH 7.3

Preservative: Sodium azide

Precaution of Use: This product contains Sodium azide: a POISONOUS AND HAZARDOUS SUBSTANCE which should be handled by trained staff only.

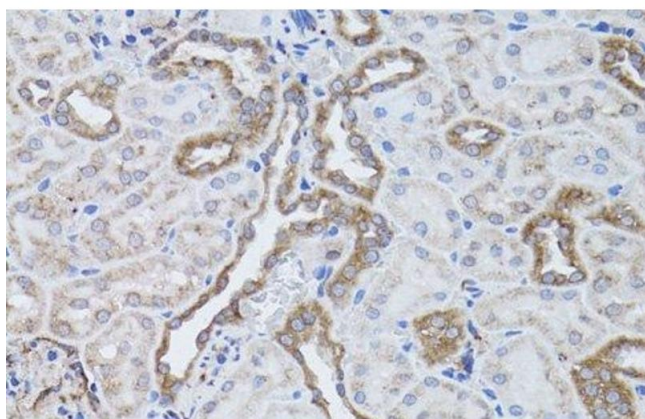
Storage: -20 °C

Storage Comment: Store at -20°C. Avoid freeze / thaw cycles.



Immunohistochemistry (Paraffin-embedded Sections)

Image 1. Immunohistochemistry of paraffin-embedded Mouse kidney using ITGAV Polyclonal Antibody at dilution of 1:50 (40x lens).



Immunohistochemistry (Paraffin-embedded Sections)

Image 2. Immunohistochemistry of paraffin-embedded Rat kidney using ITGAV Polyclonal Antibody at dilution of 1:50 (40x lens).