

Datasheet for ABIN7260173

**anti-PIN1 antibody**[Go to Product page](#)**1** Image

## Overview

|              |                                     |
|--------------|-------------------------------------|
| Quantity:    | 200 µL                              |
| Target:      | PIN1                                |
| Reactivity:  | Human, Mouse, Rat                   |
| Host:        | Rabbit                              |
| Clonality:   | Polyclonal                          |
| Conjugate:   | This PIN1 antibody is un-conjugated |
| Application: | Western Blotting (WB)               |

## Product Details

|                  |   |
|------------------|---|
| Immunogen:       | Recombinant fusion protein of human PIN1 (NP_006212.1). |
| Isotype:         | IgG   |
| Characteristics: | Polyclonal Antibody                                     |
| Purification:    | Affinity purification                                   |

## Target Details

|                   |   |
|-------------------|---|
| Target:           | PIN1  |
| Alternative Name: | PIN1 ( <a href="#">PIN1 Products</a> )  |
| Background:       | Peptidyl-prolyl cis/trans isomerases (PPlases) catalyze the cis/trans isomerization of peptidyl-prolyl peptide bonds. This gene encodes one of the PPlases, which specifically binds to phosphorylated ser/thr-pro motifs to catalytically regulate the post-phosphorylation conformation of its substrates. The conformational regulation catalyzed by this PPlase has a |

## Target Details

profound impact on key proteins involved in the regulation of cell growth, genotoxic and other stress responses, the immune response, induction and maintenance of pluripotency, germ cell development, neuronal differentiation, and survival. This enzyme also plays a key role in the pathogenesis of Alzheimer's disease and many cancers. Multiple alternatively spliced transcript variants have been found for this gene.

Molecular Weight:      Observed\_MW: 18 kDa  
                                 Calculated\_MW: 18 kDa

Gene ID:                    5300

UniProt:                    [Q13526](#)

## Application Details

Application Notes:      WB 1:500-1:2000

Restrictions:             For Research Use only

## Handling

Format:                    Liquid

Concentration:           1 mg/mL

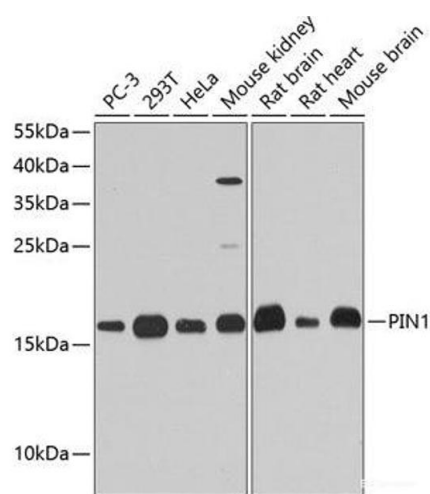
Buffer:                    PBS with 0.02 % sodium azide, 50 % glycerol, pH 7.3

Preservative:            Sodium azide

Precaution of Use:      This product contains Sodium azide: a POISONOUS AND HAZARDOUS SUBSTANCE which should be handled by trained staff only.

Storage:                   -20 °C

Storage Comment:      Store at -20°C. Avoid freeze / thaw cycles.



Western Blotting

**Image 1.** Western blot analysis of extracts of various cell lines using PIN1 Polyclonal Antibody at dilution of 1:1000.