

Datasheet for ABIN7260193

anti-LKB1 antibody

5 Images

[Go to Product page](#)

Overview

Quantity:	200 µL
Target:	LKB1 (STK11)
Reactivity:	Human, Mouse, Rat
Host:	Rabbit
Clonality:	Polyclonal
Conjugate:	This LKB1 antibody is un-conjugated
Application:	Western Blotting (WB), Immunohistochemistry (IHC), Immunofluorescence (IF)

Product Details

Immunogen:	Recombinant fusion protein of human LKB1 (NP_000446.1).
Isotype:	IgG
Characteristics:	Polyclonal Antibody
Purification:	Affinity purification

Target Details

Target:	LKB1 (STK11)
Alternative Name:	LKB1 (STK11 Products)
Background:	This gene, which encodes a member of the serine/threonine kinase family, regulates cell polarity and functions as a tumor suppressor. Mutations in this gene have been associated with Peutz-Jeghers syndrome, an autosomal dominant disorder characterized by the growth of polyps in the gastrointestinal tract, pigmented macules on the skin and mouth, and other

Target Details

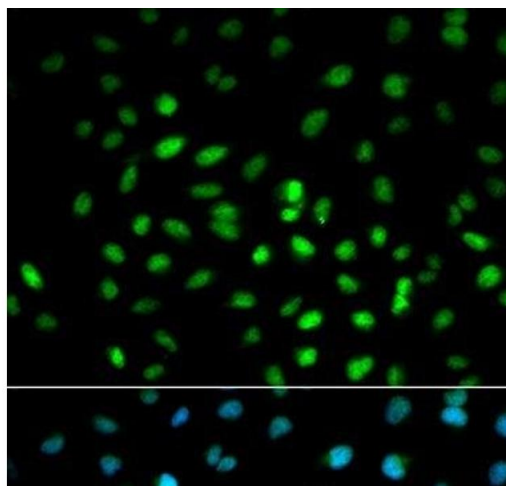
	neoplasms. Alternate transcriptional splice variants of this gene have been observed but have not been thoroughly characterized.
Molecular Weight:	Observed_MW: 54 kDa Calculated_MW: 45 kDa/48 kDa
Gene ID:	6794
UniProt:	Q15831
Pathways:	AMPK Signaling , Carbohydrate Homeostasis , Regulation of Carbohydrate Metabolic Process , Warburg Effect

Application Details

Application Notes:	WB 1:500-1:2000 IHC 1:50-1:200 IF 1:50-1:200
Restrictions:	For Research Use only

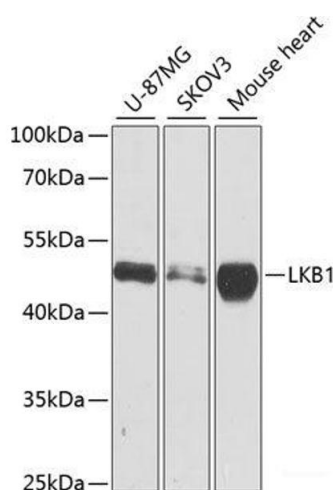
Handling

Format:	Liquid
Concentration:	1 mg/mL
Buffer:	PBS with 0.02 % sodium azide, 50 % glycerol, pH 7.3
Preservative:	Sodium azide
Precaution of Use:	This product contains Sodium azide: a POISONOUS AND HAZARDOUS SUBSTANCE which should be handled by trained staff only.
Storage:	-20 °C
Storage Comment:	Store at -20°C. Avoid freeze / thaw cycles.



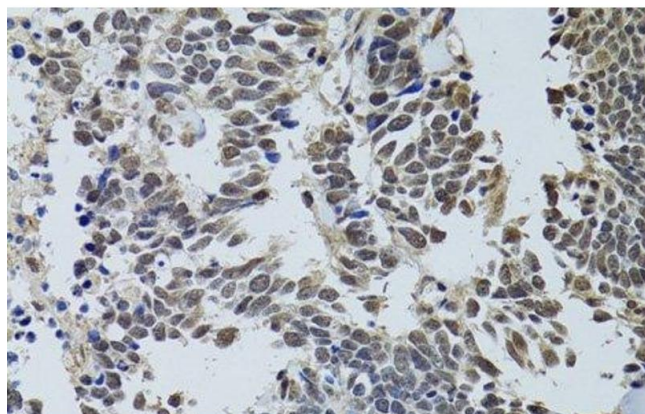
Immunofluorescence

Image 1. Immunofluorescence analysis of MCF-7 cells using LKB1 Polyclonal Antibody



Western Blotting

Image 2. Western blot analysis of extracts of various cell lines using LKB1 Polyclonal Antibody at dilution of 1:1000.



Immunohistochemistry (Paraffin-embedded Sections)

Image 3. Immunohistochemistry of paraffin-embedded Human lung cancer using LKB1 Polyclonal Antibody at dilution of 1:100 (40x lens).

Please check the [product details page](#) for more images. Overall 5 images are available for ABIN7260193.