

Datasheet for ABIN7260199

**anti-SUMO1 antibody**

## 7 Images

[Go to Product page](#)

## Overview

Quantity:	200 µL
Target:	SUMO1
Reactivity:	Human, Rat, Mouse
Host:	Rabbit
Clonality:	Polyclonal
Conjugate:	This SUMO1 antibody is un-conjugated
Application:	Western Blotting (WB), Immunofluorescence (IF), Immunohistochemistry (IHC)

## Product Details

Immunogen:	Recombinant fusion protein of human SUMO1 (NP_003343.1).
Isotype:	IgG
Characteristics:	Polyclonal Antibody
Purification:	Affinity purification

## Target Details

Target:	SUMO1
Alternative Name:	SUMO1 ( <a href="#">SUMO1 Products</a> )
Background:	This gene encodes a protein that is a member of the SUMO (small ubiquitin-like modifier) protein family. It functions in a manner similar to ubiquitin in that it is bound to target proteins as part of a post-translational modification system. However, unlike ubiquitin which targets proteins for degradation, this protein is involved in a variety of cellular processes, such as

## Target Details

nuclear transport, transcriptional regulation, apoptosis, and protein stability. It is not active until the last four amino acids of the carboxy-terminus have been cleaved off. Several pseudogenes have been reported for this gene. Alternate transcriptional splice variants encoding different isoforms have been characterized.

Molecular Weight: Observed\_MW: 90 kDa  
Calculated\_MW: 8 kDa/11 kDa

Gene ID: 7341

UniProt: [P63165](#)

Pathways: [M Phase](#), [Positive Regulation of Endopeptidase Activity](#), [Protein targeting to Nucleus](#), [Ubiquitin Proteasome Pathway](#)

## Application Details

Application Notes: WB 1:500-1:2000 IHC 1:50-1:100 IF 1:50-1:200

Restrictions: For Research Use only

## Handling

Format: Liquid

Concentration: 1 mg/mL

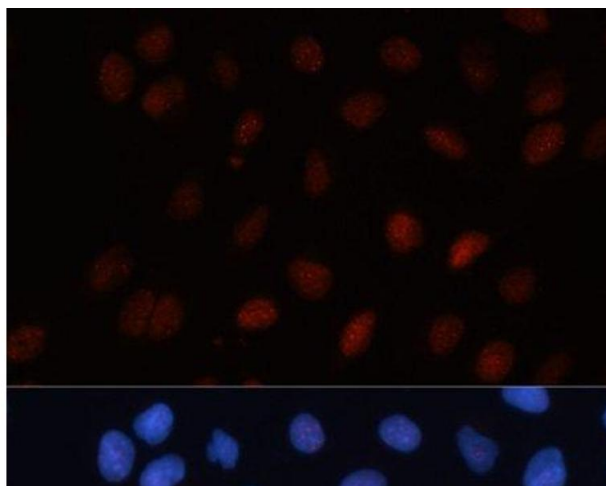
Buffer: PBS with 0.02 % sodium azide, 50 % glycerol, pH 7.3

Preservative: Sodium azide

Precaution of Use: This product contains Sodium azide: a POISONOUS AND HAZARDOUS SUBSTANCE which should be handled by trained staff only.

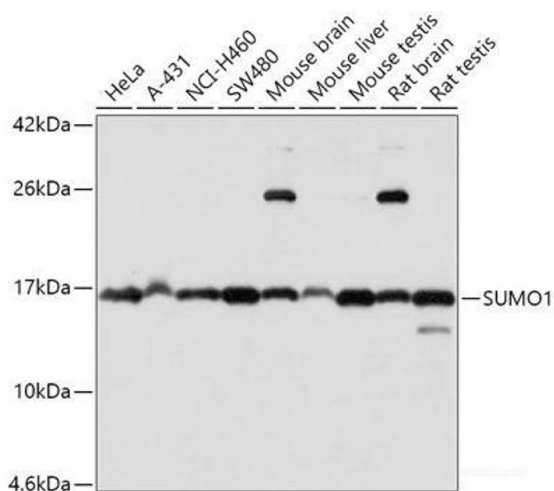
Storage: -20 °C

Storage Comment: Store at -20°C. Avoid freeze / thaw cycles.



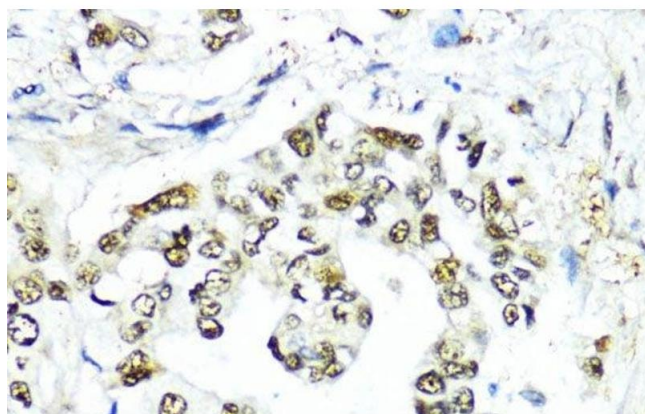
#### Immunofluorescence

**Image 1.** Immunofluorescence analysis of U-2 OS cells using SUMO1 Polyclonal Antibody at dilution of 1:100. Blue: DAPI for nuclear staining.



#### Western Blotting

**Image 2.** Western blot analysis of extracts of various cell lines using SUMO1 Polyclonal Antibody at dilution of 1:1000.



#### Immunohistochemistry (Paraffin-embedded Sections)

**Image 3.** Immunohistochemistry of paraffin-embedded Human lung cancer using SUMO1 Polyclonal Antibody at dilution of 1:200 (40x lens).

Please check the [product details page](#) for more images. Overall 7 images are available for ABIN7260199.