

Datasheet for ABIN7260225

anti-REG3g antibody[Go to Product page](#)**1** Image

Overview

Quantity:	200 µL
Target:	REG3g
Reactivity:	Human, Mouse, Rat
Host:	Rabbit
Clonality:	Polyclonal
Conjugate:	This REG3g antibody is un-conjugated
Application:	Immunofluorescence (IF)

Product Details

Immunogen:	Recombinant protein of mouse REG3G
Isotype:	IgG
Characteristics:	Polyclonal Antibody
Purification:	Affinity purification

Target Details

Target:	REG3g
Alternative Name:	REG3G (REG3g Products)
Background:	<p>This gene encodes a member of the regenerating islet-derived genes (REG)3 protein family. These proteins are secreted, C-type lectins with a carbohydrate recognition domain and N-terminal signal peptide. The protein encoded by this gene is an antimicrobial lectin with activity against Gram-positive bacteria. Alternative splicing results in multiple transcript variants</p>

Target Details

	encoding multiple isoforms.
Gene ID:	19695
UniProt:	O09049
Pathways:	Activation of Innate immune Response

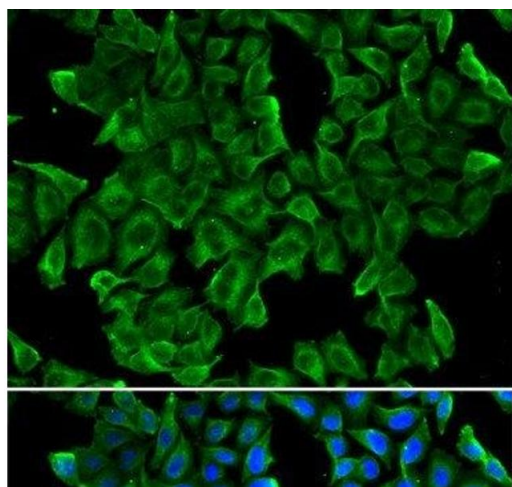
Application Details

Application Notes:	IF 1:10-1:100
Restrictions:	For Research Use only

Handling

Format:	Liquid
Concentration:	1 mg/mL
Buffer:	PBS with 0.02 % sodium azide, 50 % glycerol, pH 7.3
Preservative:	Sodium azide
Precaution of Use:	This product contains Sodium azide: a POISONOUS AND HAZARDOUS SUBSTANCE which should be handled by trained staff only.
Storage:	-20 °C
Storage Comment:	Store at -20°C. Avoid freeze / thaw cycles.

Images



Immunofluorescence

Image 1. Immunofluorescence analysis of MCF-7 cells using REG3G Polyclonal Antibody