

Datasheet for ABIN7260289

**anti-RPA2 antibody**

3 Images

[Go to Product page](#)

## Overview

Quantity:	200 µL
Target:	RPA2
Reactivity:	Human, Mouse, Rat
Host:	Rabbit
Clonality:	Polyclonal
Conjugate:	This RPA2 antibody is un-conjugated
Application:	Western Blotting (WB), Immunohistochemistry (IHC), Immunofluorescence (IF)

## Product Details

Immunogen:	Recombinant fusion protein of human RPA2 (NP_002937.1).
Isotype:	IgG
Characteristics:	Polyclonal Antibody
Purification:	Affinity purification

## Target Details

Target:	RPA2
Alternative Name:	RPA2 ( <a href="#">RPA2 Products</a> )
Background:	Replication protein A 32 kDa subunit is a protein that in humans is encoded by the RPA2 gene. As part of the heterotrimeric replication protein A complex (RPA/RP-A), binds and stabilizes single-stranded DNA intermediates, that form during DNA replication or upon DNA stress. It prevents their reannealing and in parallel, recruits and activates different proteins and complexes

## Target Details

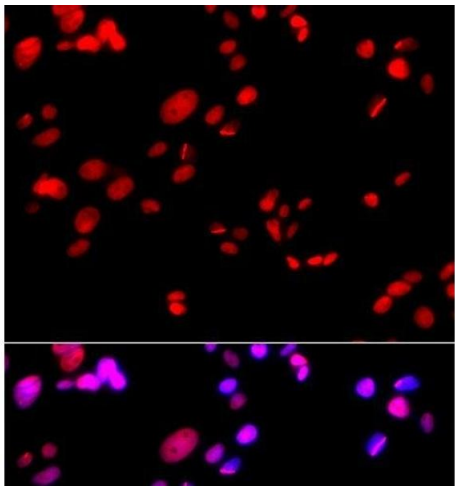
	involved in DNA metabolism. Thereby, it plays an essential role both in DNA replication and the cellular response to DNA damage.
Molecular Weight:	Observed_MW: 32 kDa Calculated_MW: 29 kDa/30 kDa/38 kDa
Gene ID:	6118
UniProt:	<a href="#">P15927</a>
Pathways:	<a href="#">Telomere Maintenance</a> , <a href="#">DNA Damage Repair</a> , <a href="#">Mitotic G1-G1/S Phases</a> , <a href="#">DNA Replication</a> , <a href="#">Synthesis of DNA</a>

## Application Details

Application Notes:	WB 1:500-1:2000 IHC 1:50-1:200 IF 1:50-1:100
Restrictions:	For Research Use only

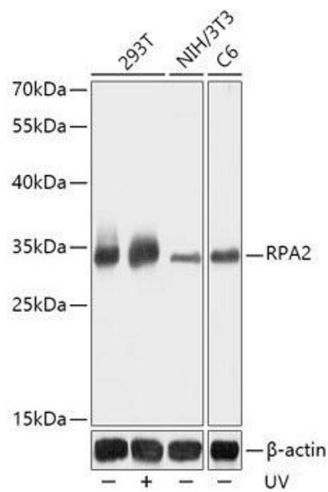
## Handling

Format:	Liquid
Concentration:	1 mg/mL
Buffer:	PBS with 0.02 % sodium azide, 50 % glycerol, pH 7.3
Preservative:	Sodium azide
Precaution of Use:	This product contains Sodium azide: a POISONOUS AND HAZARDOUS SUBSTANCE which should be handled by trained staff only.
Storage:	-20 °C
Storage Comment:	Store at -20°C. Avoid freeze / thaw cycles.



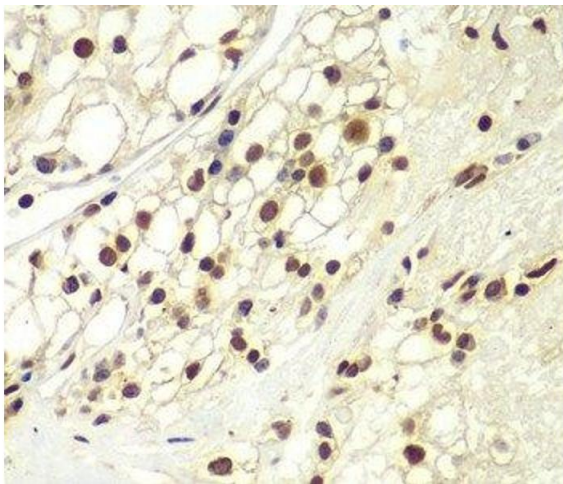
### Immunofluorescence

**Image 1.** Immunofluorescence analysis of GFP-RNF168 transgenic U2OS cells using RPA2 Polyclonal Antibody



### Western Blotting

**Image 2.** Western blot analysis of extracts of various cell lines using RPA2 Polyclonal Antibody at dilution of 1:1000. 293T cells were treated by UV at room temperature for 15-30 minutes.



### Immunohistochemistry (Paraffin-embedded Sections)

**Image 3.** Immunohistochemistry of paraffin-embedded Human kidney cancer using RPA2 Polyclonal Antibody at dilution of 1:100 (40x lens).