

Datasheet for ABIN7260313  
**anti-CUX1 antibody**



[Go to Product page](#)

1 Image

## Overview

Quantity:	200 µL
Target:	CUX1
Reactivity:	Human, Mouse, Rat
Host:	Rabbit
Clonality:	Polyclonal
Conjugate:	This CUX1 antibody is un-conjugated
Application:	Immunofluorescence (IF)

## Product Details

Immunogen:	Recombinant fusion protein of human CUX1 (NP_001189472.1).
Isotype:	IgG
Characteristics:	Polyclonal Antibody
Purification:	Affinity purification

## Target Details

Target:	CUX1
Alternative Name:	CUX1 ( <a href="#">CUX1 Products</a> )
Background:	The protein encoded by this gene is a member of the homeodomain family of DNA binding proteins. It may regulate gene expression, morphogenesis, and differentiation and it may also play a role in the cell cycle progression. Several alternatively spliced transcript variants encoding different isoforms have been identified.

## Target Details

Gene ID:	1523
UniProt:	<a href="#">P39880, Q13948</a>
Pathways:	<a href="#">Cellular Glucan Metabolic Process</a>

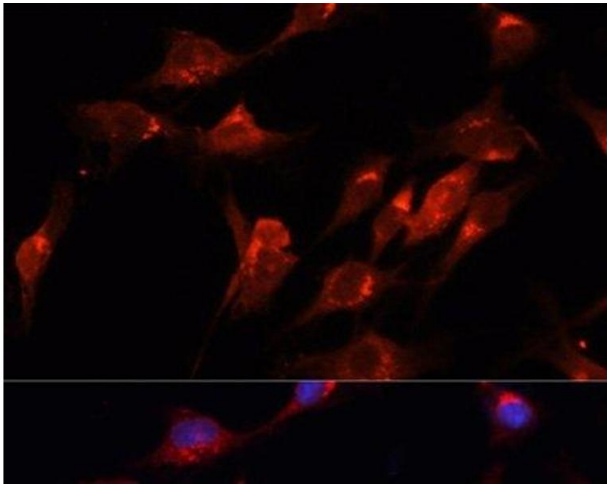
## Application Details

Application Notes:	IF 1:50-1:200
Restrictions:	For Research Use only

## Handling

Format:	Liquid
Concentration:	1 mg/mL
Buffer:	PBS with 0.02 % sodium azide, 50 % glycerol, pH 7.3
Preservative:	Sodium azide
Precaution of Use:	This product contains Sodium azide: a POISONOUS AND HAZARDOUS SUBSTANCE which should be handled by trained staff only.
Storage:	-20 °C
Storage Comment:	Store at -20°C. Avoid freeze / thaw cycles.

## Images



### Immunofluorescence

**Image 1.** Immunofluorescence analysis of C6 cells using CUX1 Polyclonal Antibody at dilution of 1:100. Blue: DAPI for nuclear staining.