

Datasheet for ABIN7260435

anti-FLNB antibody

7 Images

[Go to Product page](#)

Overview

Quantity:	200 µL
Target:	FLNB
Reactivity:	Human, Mouse, Rat
Host:	Rabbit
Clonality:	Polyclonal
Conjugate:	This FLNB antibody is un-conjugated
Application:	Immunohistochemistry (IHC), Immunofluorescence (IF)

Product Details

Immunogen:	Recombinant fusion protein of human FLNB (NP_001157789.1).
Isotype:	IgG
Characteristics:	Polyclonal Antibody
Purification:	Affinity purification

Target Details

Target:	FLNB
Alternative Name:	FLNB (FLNB Products)
Background:	This gene encodes a member of the filamin family. The encoded protein interacts with glycoprotein Ib alpha as part of the process to repair vascular injuries. The platelet glycoprotein Ib complex includes glycoprotein Ib alpha, and it binds the actin cytoskeleton. Mutations in this gene have been found in several conditions: atelosteogenesis type 1 and type 3, boomerang

Target Details

dysplasia, autosomal dominant Larsen syndrome, and spondylocarpotarsal synostosis syndrome. Multiple alternatively spliced transcript variants that encode different protein isoforms have been described for this gene.

Gene ID: 2317

UniProt: [O75369](#)

Pathways: [Maintenance of Protein Location](#)

Application Details

Application Notes: IHC 1:50-1:100 IF 1:20-1:100

Restrictions: For Research Use only

Handling

Format: Liquid

Concentration: 1 mg/mL

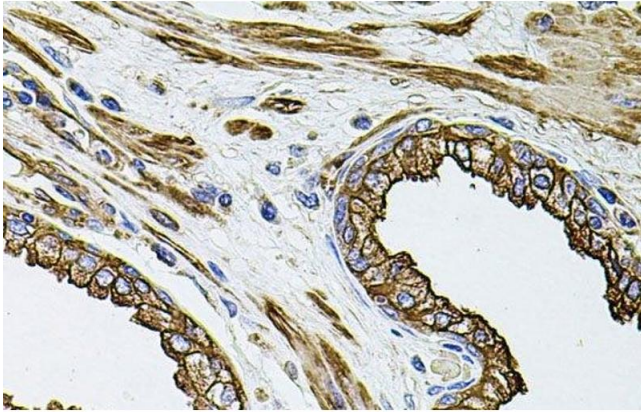
Buffer: PBS with 0.02 % sodium azide, 50 % glycerol, pH 7.3

Preservative: Sodium azide

Precaution of Use: This product contains Sodium azide: a POISONOUS AND HAZARDOUS SUBSTANCE which should be handled by trained staff only.

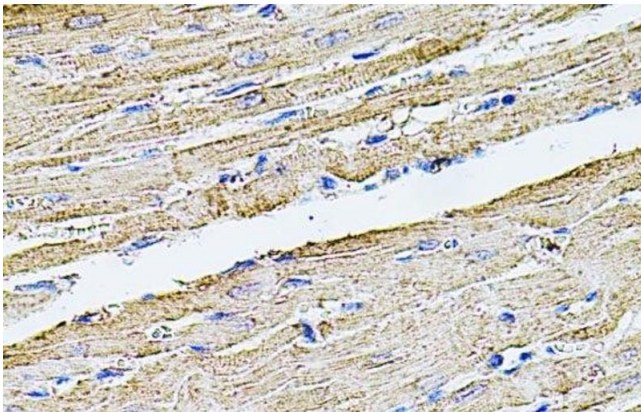
Storage: -20 °C

Storage Comment: Store at -20°C. Avoid freeze / thaw cycles.



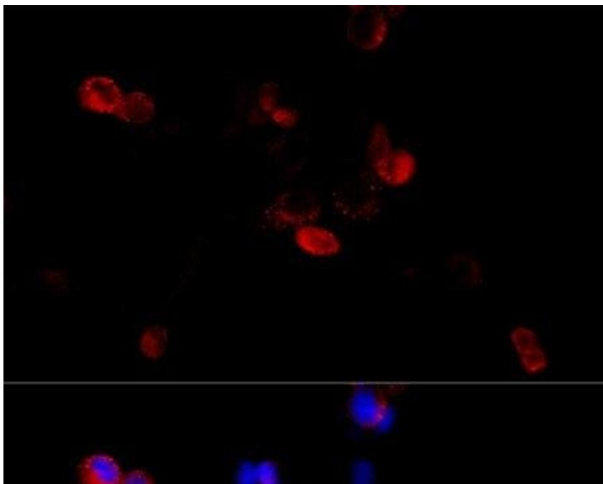
Immunohistochemistry (Paraffin-embedded Sections)

Image 1. Immunohistochemistry of paraffin-embedded Human prostate using FLNB Polyclonal Antibody at dilution of 1:100 (40x lens).



Immunohistochemistry (Paraffin-embedded Sections)

Image 2. Immunohistochemistry of paraffin-embedded Rat heart using FLNB Polyclonal Antibody at dilution of 1:100 (40x lens).



Immunofluorescence

Image 3. Immunofluorescence analysis of HeLa cells using FLNB Polyclonal Antibody at dilution of 1:100 (40x lens). Blue: DAPI for nuclear staining.

Please check the [product details page](#) for more images. Overall 7 images are available for ABIN7260435.