



[Go to Product page](#)

Datasheet for ABIN7260439
anti-GTF2F1 antibody

4 Images

Overview

Quantity:	200 µL
Target:	GTF2F1
Reactivity:	Human, Rat
Host:	Rabbit
Clonality:	Polyclonal
Conjugate:	This GTF2F1 antibody is un-conjugated
Application:	Immunohistochemistry (IHC), Immunofluorescence (IF)

Product Details

Immunogen:	Recombinant fusion protein of human GTF2F1 (NP_002087.2).
Isotype:	IgG
Characteristics:	Polyclonal Antibody
Purification:	Affinity purification

Target Details

Target:	GTF2F1
Alternative Name:	GTF2F1 (GTF2F1 Products)
Background:	GTF2F1 (General Transcription Factor IIF Subunit 1) is a Protein Coding gene. Among its related pathways are Signaling by FGFR2 in disease and Signaling by GPCR. Gene Ontology (GO) annotations related to this gene include transcription coactivator activity.

Target Details

Gene ID: 2962

UniProt: [P35269](#)

Application Details

Application Notes: IHC 1:50-1:200 IF 1:50-1:100

Restrictions: For Research Use only

Handling

Format: Liquid

Concentration: 1 mg/mL

Buffer: PBS with 0.02 % sodium azide, 50 % glycerol, pH 7.3

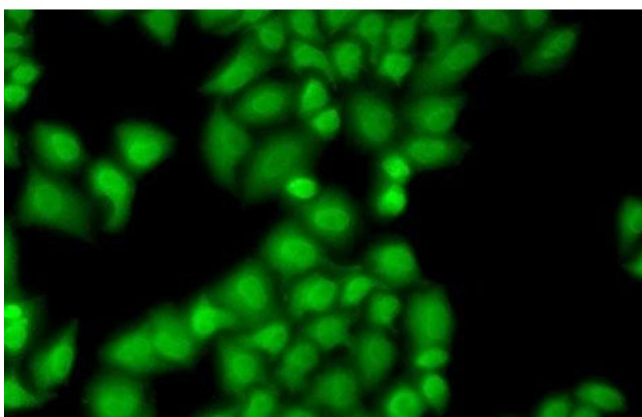
Preservative: Sodium azide

Precaution of Use: This product contains Sodium azide: a POISONOUS AND HAZARDOUS SUBSTANCE which should be handled by trained staff only.

Storage: -20 °C

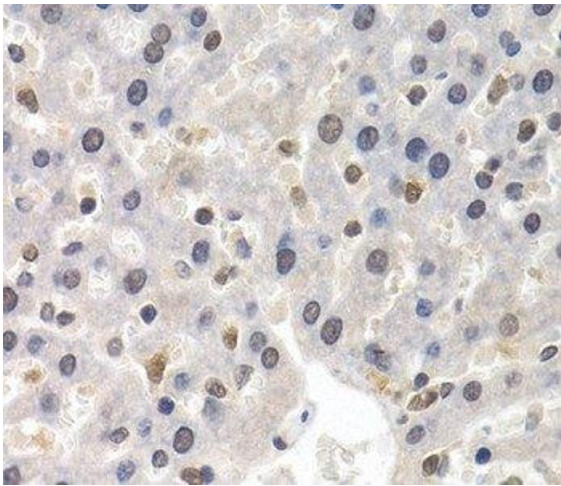
Storage Comment: Store at -20°C. Avoid freeze / thaw cycles.

Images



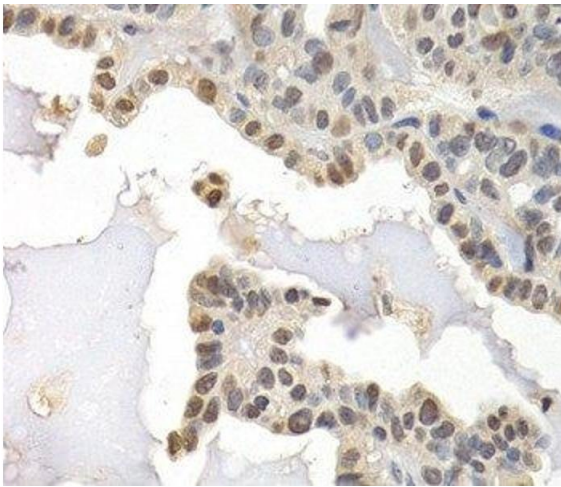
Immunofluorescence

Image 1. Immunofluorescence analysis of MCF7 cells using GTF2F1 Polyclonal Antibody



Immunohistochemistry (Paraffin-embedded Sections)

Image 2. Immunohistochemistry of paraffin-embedded Rat liver using GTF2F1 Polyclonal Antibody at dilution of 1:200 (40x lens).



Immunohistochemistry (Paraffin-embedded Sections)

Image 3. Immunohistochemistry of paraffin-embedded Human thyroid cancer using GTF2F1 Polyclonal Antibody at dilution of 1:200 (40x lens).

Please check the [product details page](#) for more images. Overall 4 images are available for ABIN7260439.