

Datasheet for ABIN7260443

**anti-Interleukin enhancer-binding factor 3 (ILF3) antibody**[Go to Product page](#)

## 5 Images

## Overview

Quantity:	200 µL
Target:	Interleukin enhancer-binding factor 3 (ILF3)
Reactivity:	Human, Mouse, Rat
Host:	Rabbit
Clonality:	Polyclonal
Conjugate:	Un-conjugated
Application:	Western Blotting (WB), Immunofluorescence (IF)

## Product Details

Immunogen:	Recombinant fusion protein of human ILF3 (NP_036350.2).
Isotype:	IgG
Characteristics:	Polyclonal Antibody
Purification:	Affinity purification

## Target Details

Target:	Interleukin enhancer-binding factor 3 (ILF3)
Alternative Name:	ILF3 ( <a href="#">ILF3 Products</a> )
Background:	This gene encodes a double-stranded RNA (dsRNA) binding protein that complexes with other proteins, dsRNAs, small noncoding RNAs, and mRNAs to regulate gene expression and stabilize mRNAs. This protein (NF90, ILF3) forms a heterodimer with a 45 kDa transcription factor (NF45, ILF2) required for T-cell expression of interleukin 2. This complex has been shown to

## Target Details

affect the redistribution of nuclear mRNA to the cytoplasm. Knockdown of NF45 or NF90 protein retards cell growth, possibly by inhibition of mRNA stabilization. In contrast, an isoform (NF110) of this gene that is predominantly restricted to the nucleus has only minor effects on cell growth when its levels are reduced. Alternative splicing results in multiple transcript variants encoding distinct isoforms.

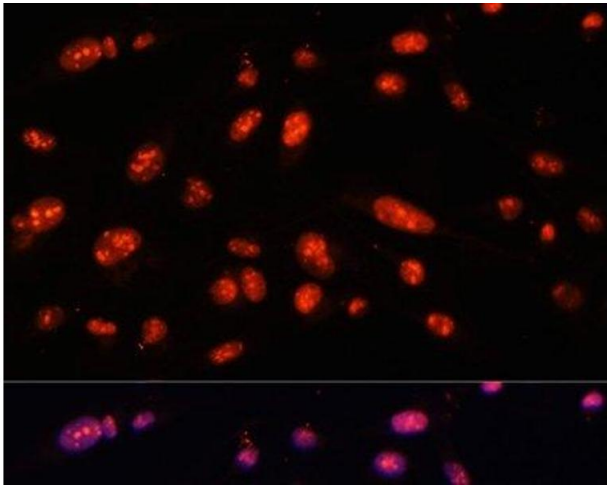
Molecular Weight:	Observed_MW: 95 kDa/120 kDa Calculated_MW: 74 kDa/75 kDa/76 kDa/82 kDa/95 kDa
Gene ID:	3609
UniProt:	<a href="#">Q12906</a>
Pathways:	<a href="#">M Phase</a>

## Application Details

Application Notes:	WB 1:500-1:2000 IF 1:50-1:200
Restrictions:	For Research Use only

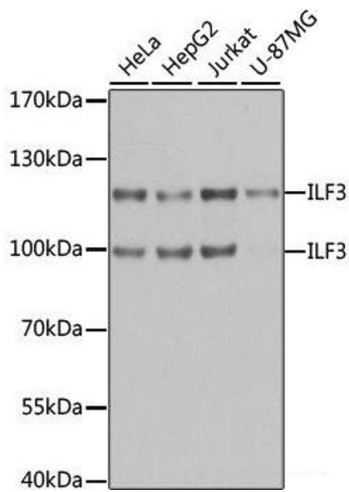
## Handling

Format:	Liquid
Concentration:	1 mg/mL
Buffer:	PBS with 0.02 % sodium azide, 50 % glycerol, pH 7.3
Preservative:	Sodium azide
Precaution of Use:	This product contains Sodium azide: a POISONOUS AND HAZARDOUS SUBSTANCE which should be handled by trained staff only.
Storage:	-20 °C
Storage Comment:	Store at -20°C. Avoid freeze / thaw cycles.



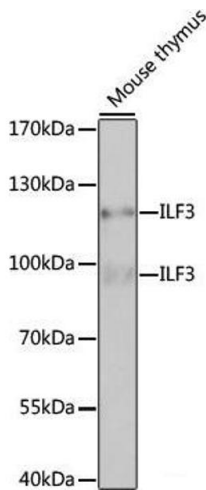
**Immunofluorescence**

**Image 1.** Immunofluorescence analysis of U-2 OS cells using ILF3 Polyclonal Antibody at dilution of 1:100. Blue: DAPI for nuclear staining.



**Western Blotting**

**Image 2.** Western blot analysis of extracts of various cell lines using ILF3 Polyclonal Antibody at dilution of 1:1000.



**Western Blotting**

**Image 3.** Western blot analysis of extracts of Mouse thymus using ILF3 Polyclonal Antibody at dilution of 1:1000.

Please check the [product details page](#) for more images. Overall 5 images are available for ABIN7260443.