

Datasheet for ABIN726050

anti-Actin antibody

3 Images

8 Publications

[Go to Product page](#)

Overview

Quantity:	100 µL
Target:	Actin
Reactivity:	Human, Mouse, Rat, Chicken, Dog, Cow, Pig, Guinea Pig
Host:	Rabbit
Clonality:	Polyclonal
Conjugate:	This Actin antibody is un-conjugated
Application:	Western Blotting (WB), ELISA, Immunohistochemistry (Paraffin-embedded Sections) (IHC (p)), Immunofluorescence (Paraffin-embedded Sections) (IF (p)), Immunofluorescence (Cultured Cells) (IF (cc)), Flow Cytometry (FACS)

Product Details

Immunogen:	KLH conjugated synthetic peptide derived from human alpha Actin
Isotype:	IgG
Cross-Reactivity:	Dog, Human, Mouse, Rat
Predicted Reactivity:	Cow, Sheep, Pig, Chicken, Cat, Rabbit
Purification:	Purified by Protein A.

Target Details

Target:	Actin
Abstract:	Actin Products

Target Details

Background:	Synonyms: Actin, alpha skeletal muscle, Alpha-actin-1, ACTA1, ACTA Background: Actins are highly conserved proteins that are involved in various types of cell motility and are ubiquitously expressed in all eukaryotic cells.
Molecular Weight:	42kDa
Gene ID:	58

Application Details

Application Notes:	WB(1:100-500) Optimal working dilution should be determined by the investigator.
Restrictions:	For Research Use only

Handling

Format:	Liquid
Concentration:	1 µg/µL
Buffer:	0.01M TBS(pH 7.4) with 1 % BSA, 0.02 % Proclin300 and 50 % Glycerol.
Preservative:	Sodium azide
Precaution of Use:	This product contains sodium azide: a POISONOUS AND HAZARDOUS SUBSTANCE which should be handled by trained staff only.
Storage:	4 °C,-20 °C
Storage Comment:	Shipped at 4°C. Store at -20°C for one year. Avoid repeated freeze/thaw cycles.
Expiry Date:	12 months

Publications

Product cited in:	Chen, Cheng, Chen, Sue, Liu, Cheng, Hsu, Chen: "MicroRNA-328 inhibits renal tubular cell epithelial-to-mesenchymal transition by targeting the CD44 in pressure-induced renal fibrosis." in: PLoS ONE , Vol. 9, Issue 6, pp. e99802, (2014) (PubMed).
	Wang, Liao: "Histologic and functional outcomes of small intestine submucosa-regenerated bladder tissue." in: BMC urology , Vol. 14, pp. 69, (2014) (PubMed).
	Song, Yan, An, Hao, Guo, Zhang, Li, Li, Sun: "Potential contribution of SOCC to cerebral

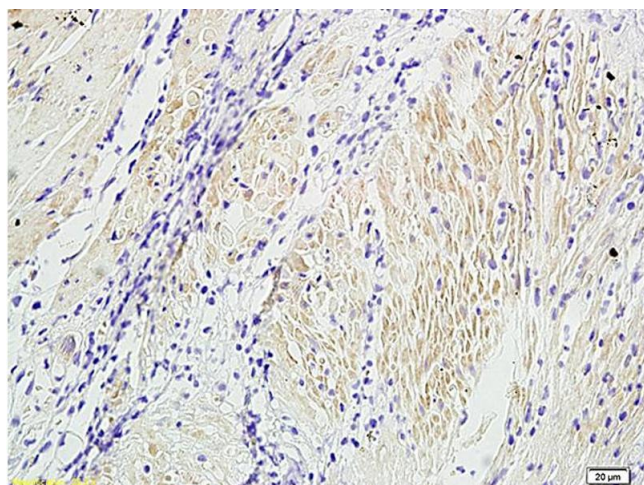
vasospasm after experimental subarachnoid hemorrhage in rats." in: **Brain research**, Vol. 1517, pp. 93-103, (2013) ([PubMed](#)).

Lv, Fan, Su: "Is a swine model of arteriovenous malformation suitable for human extracranial arteriovenous malformation? A preliminary study." in: **Cardiovascular and interventional radiology**, Vol. 36, Issue 5, pp. 1364-70, (2013) ([PubMed](#)).

Liu, Xue, Tang, Hou, Qi, Chen, Chen, Zhang, Chen, Xu: "A simple method for isolating and culturing the rat brain microvascular endothelial cells." in: **Microvascular research**, Vol. 90, pp. 199-205, (2013) ([PubMed](#)).

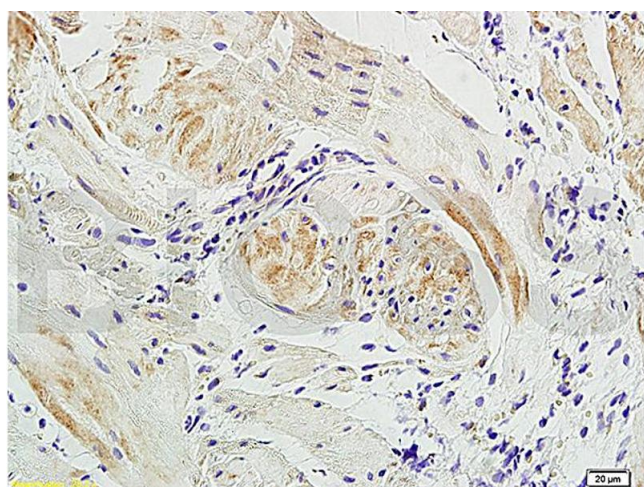
There are more publications referencing this product on: [Product page](#)

Images



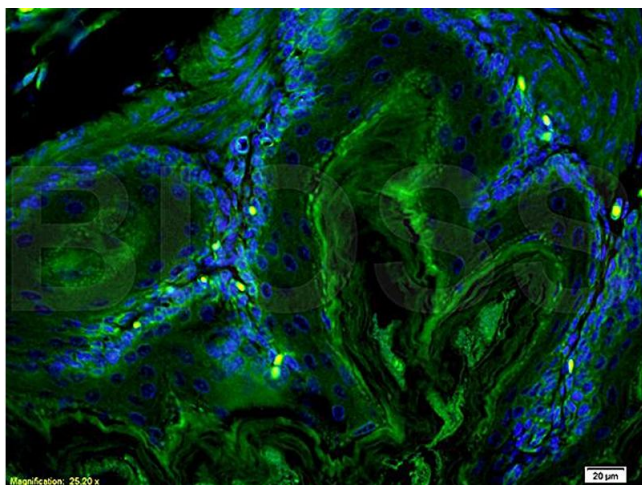
Immunohistochemistry

Image 1. Formalin-fixed and paraffin embedded dog bladder labeled with Anti-Alpha-SMA Polyclonal Antibody, Unconjugated (ABIN726050) at 1:300 followed by conjugation to the secondary antibody and DAB staining



Immunohistochemistry

Image 2. Formalin-fixed and paraffin embedded: dog bladder tissue labeled with Anti-Actin A/Alpha SMA Polyclonal Antibody, Unconjugated (ABIN726050) at 1:300, followed by conjugation to the secondary antibody.



Immunofluorescence

Image 3. Mouse Small Intestine labeled with Anti-Actin A/Alpha SMA Polyclonal Antibody, Unconjugated (ABIN726050) 1:200 followed by conjugation to the secondary antibody Goat Anti-Rabbit IgG, FITC conjugated used at 1:200 dilution for 40 minutes at 37 °C