

Datasheet for ABIN7260509

anti-CYP3A4 antibody

5 Images

[Go to Product page](#)

Overview

Quantity:	200 µL
Target:	CYP3A4
Reactivity:	Human, Mouse, Rat
Host:	Rabbit
Clonality:	Polyclonal
Conjugate:	This CYP3A4 antibody is un-conjugated
Application:	Immunohistochemistry (IHC), Immunofluorescence (IF)

Product Details

Immunogen:	Recombinant fusion protein of human CYP3A4 (NP_059488.2).
Isotype:	IgG
Characteristics:	Polyclonal Antibody
Purification:	Affinity purification

Target Details

Target:	CYP3A4
Alternative Name:	CYP3A4 (CYP3A4 Products)
Background:	This gene encodes a member of the cytochrome P450 superfamily of enzymes. The cytochrome P450 proteins are monooxygenases that catalyze many reactions involved in drug metabolism and synthesis of cholesterol, steroids and other lipids. This protein localizes to the endoplasmic reticulum and its expression is induced by glucocorticoids and some

Target Details

pharmacological agents. This enzyme is involved in the metabolism of approximately half the drugs in use today, including acetaminophen, codeine, cyclosporin A, diazepam and erythromycin. The enzyme also metabolizes some steroids and carcinogens. This gene is part of a cluster of cytochrome P450 genes on chromosome 7q21.1. Previously another CYP3A gene, CYP3A3, was thought to exist, however, it is now thought that this sequence represents a transcript variant of CYP3A4. Alternatively spliced transcript variants encoding different isoforms have been identified.

Gene ID: 1576

UniProt: [P08684](#)

Pathways: [Steroid Hormone Biosynthesis](#)

Application Details

Application Notes: IHC 1:20-1:50 IF 1:20-1:100

Restrictions: For Research Use only

Handling

Format: Liquid

Concentration: 1 mg/mL

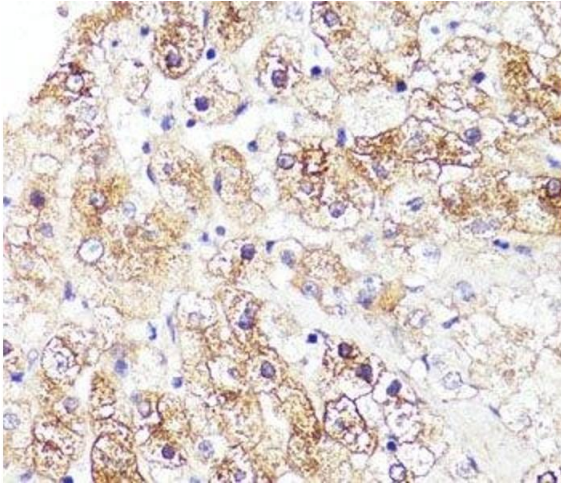
Buffer: PBS with 0.02 % sodium azide, 50 % glycerol, pH 7.3

Preservative: Sodium azide

Precaution of Use: This product contains Sodium azide: a POISONOUS AND HAZARDOUS SUBSTANCE which should be handled by trained staff only.

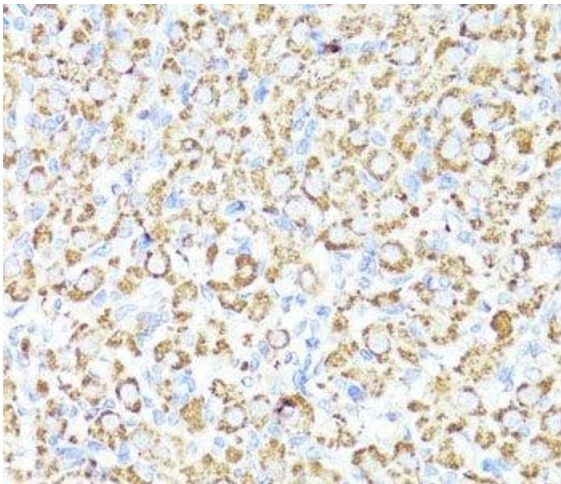
Storage: -20 °C

Storage Comment: Store at -20°C. Avoid freeze / thaw cycles.



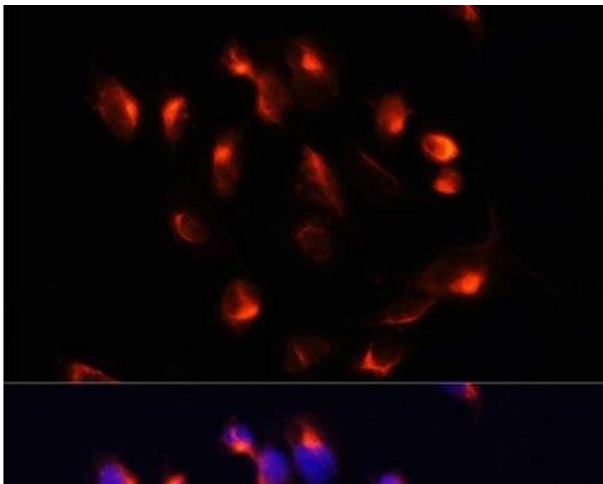
Immunohistochemistry (Paraffin-embedded Sections)

Image 1. Immunohistochemistry of paraffin-embedded Human liver using CYP3A4 Polyclonal Antibody at dilution of 1:100 (40x lens).



Immunohistochemistry (Paraffin-embedded Sections)

Image 2. Immunohistochemistry of paraffin-embedded Rat ovary using CYP3A4 Polyclonal Antibody at dilution of 1:100 (40x lens).



Immunofluorescence

Image 3. Immunofluorescence analysis of U2OS cells using CYP3A4 Polyclonal Antibody at dilution of 1:100. Blue: DAPI for nuclear staining.

Please check the [product details page](#) for more images. Overall 5 images are available for ABIN7260509.