



Datasheet for ABIN7260541

## anti-SKP1 antibody



[Go to Product page](#)

### 1 Image

#### Overview

|              |                                     |
|--------------|-------------------------------------|
| Quantity:    | 200 µL                              |
| Target:      | SKP1                                |
| Reactivity:  | Human, Mouse                        |
| Host:        | Rabbit                              |
| Clonality:   | Polyclonal                          |
| Conjugate:   | This SKP1 antibody is un-conjugated |
| Application: | Immunohistochemistry (IHC)          |

#### Product Details

|                  |   |
|------------------|---|
| Immunogen:       | Recombinant fusion protein of human SKP1 (NP_733779.1). |
| Isotype:         | IgG   |
| Characteristics: | Polyclonal Antibody                                     |
| Purification:    | Affinity purification                                   |

#### Target Details

|                   |  |
|-------------------|--|
| Target:           | SKP1   |
| Alternative Name: | SKP1 ( <a href="#">SKP1 Products</a> )   |
| Background:       | This gene encodes a component of SCF complexes, which are composed of this protein, cullin 1, a ring-box protein, and one member of the F-box family of proteins. This protein binds directly to the F-box motif found in F-box proteins. SCF complexes are involved in the regulated ubiquitination of specific protein substrates, which targets them for degradation by the |

## Target Details

---

proteasome. Specific F-box proteins recognize different target protein(s), and many specific SCF substrates have been identified including regulators of cell cycle progression and development. Studies have also characterized the protein as an RNA polymerase II elongation factor. Alternative splicing of this gene results in two transcript variants. A related pseudogene has been identified on chromosome 7.

Gene ID: 6500

UniProt: [P63208](#)

Pathways: [Cell Division Cycle](#), [Hedgehog Signaling](#), [Mitotic G1-G1/S Phases](#)

## Application Details

---

Application Notes: IHC 1:50-1:100

Restrictions: For Research Use only

## Handling

---

Format: Liquid

Concentration: 1 mg/mL

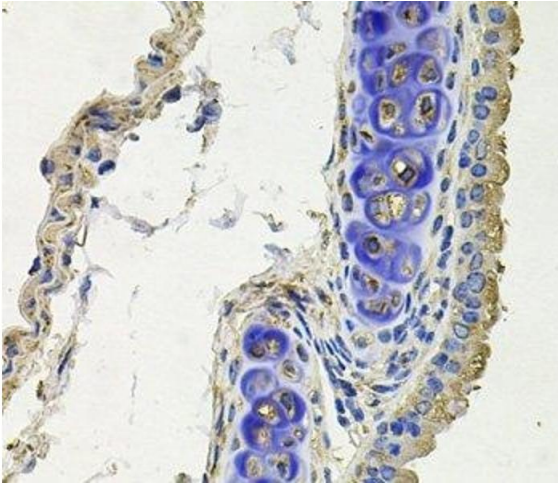
Buffer: PBS with 0.02 % sodium azide, 50 % glycerol, pH 7.3

Preservative: Sodium azide

Precaution of Use: This product contains Sodium azide: a POISONOUS AND HAZARDOUS SUBSTANCE which should be handled by trained staff only.

Storage: -20 °C

Storage Comment: Store at -20°C. Avoid freeze / thaw cycles.



#### Immunohistochemistry (Paraffin-embedded Sections)

**Image 1.** Immunohistochemistry of paraffin-embedded Mouse lung using SKP1 Polyclonal Antibody at dilution of 1:100 (40x lens).