

Datasheet for ABIN7260551
anti-Cytokeratin 7 antibody

7 Images

[Go to Product page](#)

Overview

Quantity:	200 µL
Target:	Cytokeratin 7 (KRT7)
Reactivity:	Human, Rat, Mouse
Host:	Rabbit
Clonality:	Polyclonal
Conjugate:	This Cytokeratin 7 antibody is un-conjugated
Application:	Immunohistochemistry (IHC), Immunofluorescence (IF), Western Blotting (WB)

Product Details

Immunogen:	Recombinant fusion protein of human KRT7 (NP_005547.3).
Isotype:	IgG
Characteristics:	Polyclonal Antibody
Purification:	Affinity purification

Target Details

Target:	Cytokeratin 7 (KRT7)
Alternative Name:	KRT7 (KRT7 Products)
Background:	The protein encoded by this gene is a member of the keratin gene family. The type II cytokeratins consist of basic or neutral proteins which are arranged in pairs of heterotypic keratin chains coexpressed during differentiation of simple and stratified epithelial tissues. This type II cytokeratin is specifically expressed in the simple epithelia lining the cavities of the

Target Details

internal organs and in the gland ducts and blood vessels. The genes encoding the type II cytokeratins are clustered in a region of chromosome 12q12-q13. Alternative splicing may result in several transcript variants, however, not all variants have been fully described.

Molecular Weight: Observed_MW: 51 kDa
Calculated_MW: 51 kDa

Gene ID: 3855

UniProt: [P08729](#)

Application Details

Application Notes: WB 1:500-1:2000 IHC 1:50-1:200 IF 1:50-1:200

Restrictions: For Research Use only

Handling

Format: Liquid

Concentration: 1 mg/mL

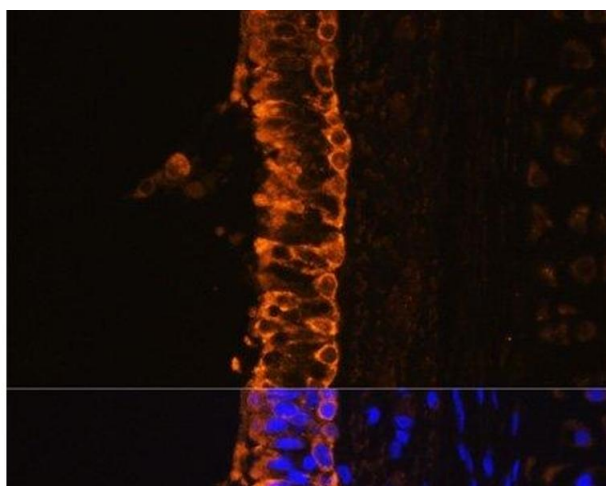
Buffer: PBS with 0.02 % sodium azide, 50 % glycerol, pH 7.3

Preservative: Sodium azide

Precaution of Use: This product contains Sodium azide: a POISONOUS AND HAZARDOUS SUBSTANCE which should be handled by trained staff only.

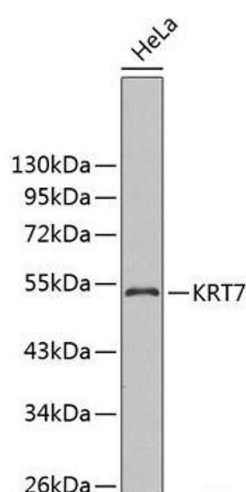
Storage: -20 °C

Storage Comment: Store at -20°C. Avoid freeze / thaw cycles.



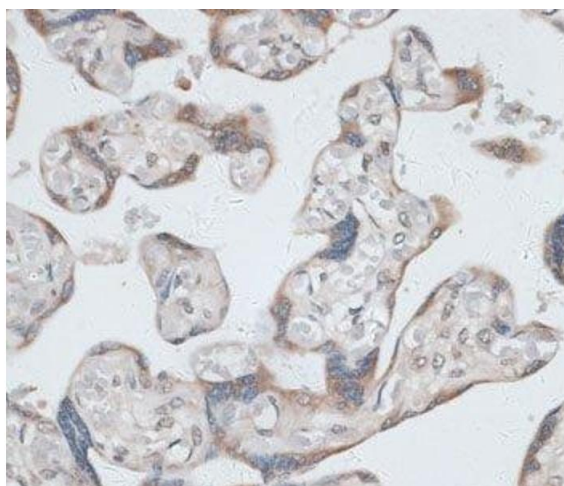
Immunofluorescence

Image 1. Immunofluorescence analysis of Rat bronchus cells using KRT7 Polyclonal Antibody at dilution of 1:100. Blue: DAPI for nuclear staining.



Western Blotting

Image 2. Western blot analysis of extracts of HeLa cells using KRT7 Polyclonal Antibody.



Immunohistochemistry (Paraffin-embedded Sections)

Image 3. Immunohistochemistry of paraffin-embedded Human placenta using KRT7 Polyclonal Antibody at dilution of 1:100 (40x lens).

Please check the [product details page](#) for more images. Overall 7 images are available for ABIN7260551.