

Datasheet for ABIN7260555

**anti-Neural Wiskott-Aldrich syndrome protein (WASL) antibody**[Go to Product page](#)

## 7 Images

## Overview

Quantity:	200 µL
Target:	Neural Wiskott-Aldrich syndrome protein (WASL)
Reactivity:	Human, Mouse, Rat
Host:	Rabbit
Clonality:	Polyclonal
Conjugate:	Un-conjugated
Application:	Western Blotting (WB), Immunofluorescence (IF), Immunohistochemistry (IHC)

## Product Details

Immunogen:	Recombinant fusion protein of human N-WASP (NP_003932.3).
Isotype:	IgG
Characteristics:	Polyclonal Antibody
Purification:	Affinity purification

## Target Details

Target:	Neural Wiskott-Aldrich syndrome protein (WASL)
Alternative Name:	N-WASP ( <a href="#">WASL Products</a> )
Background:	This gene encodes a member of the Wiskott-Aldrich syndrome (WAS) protein family. Wiskott-Aldrich syndrome proteins share similar domain structure, and associate with a variety of signaling molecules to alter the actin cytoskeleton. The encoded protein is highly expressed in neural tissues, and interacts with several proteins involved in cytoskeletal organization,

## Target Details

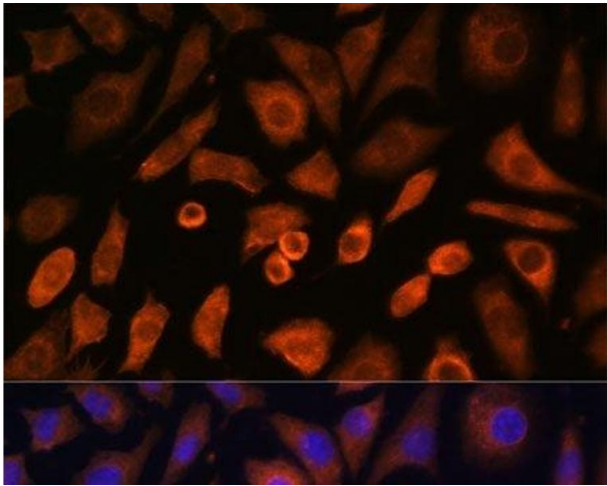
	including cell division control protein 42 (CDC42) and the actin-related protein-2/3 (ARP2/3) complex. The encoded protein may be involved in the formation of long actin microspikes, and in neurite extension.
Molecular Weight:	Observed_MW: 65 kDa Calculated_MW: 54 kDa
Gene ID:	8976
UniProt:	<a href="#">O00401</a>

## Application Details

Application Notes:	WB 1:500-1:2000 IHC 1:50-1:100 IF 1:50-1:100
Restrictions:	For Research Use only

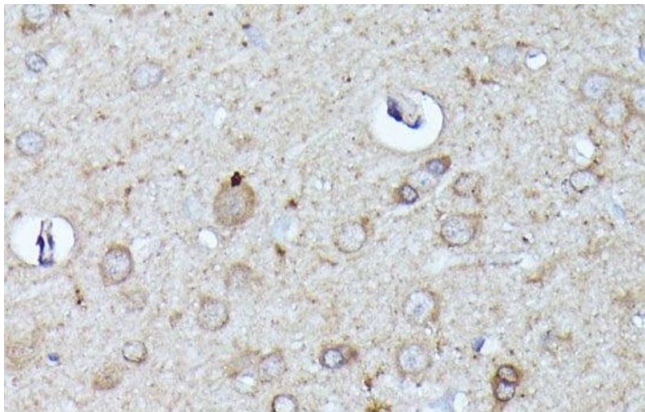
## Handling

Format:	Liquid
Concentration:	1 mg/mL
Buffer:	PBS with 0.02 % sodium azide, 50 % glycerol, pH 7.3
Preservative:	Sodium azide
Precaution of Use:	This product contains Sodium azide: a POISONOUS AND HAZARDOUS SUBSTANCE which should be handled by trained staff only.
Storage:	-20 °C
Storage Comment:	Store at -20°C. Avoid freeze / thaw cycles.



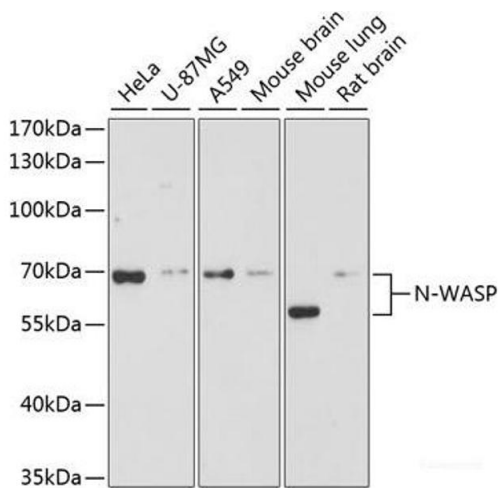
### Immunofluorescence

**Image 1.** Immunofluorescence analysis of L-929 cells using N-WASP Polyclonal Antibody at dilution of 1:100 (40x lens). Blue: DAPI for nuclear staining.



### Immunohistochemistry (Paraffin-embedded Sections)

**Image 2.** Immunohistochemistry of paraffin-embedded Rat brain using N-WASP Polyclonal Antibody at dilution of 1:100 (40x lens).



### Western Blotting

**Image 3.** Western blot analysis of extracts of various cell lines using N-WASP Polyclonal Antibody at dilution of 1:3000.

Please check the [product details page](#) for more images. Overall 7 images are available for ABIN7260555.