



Datasheet for ABIN7260633

anti-GRB14 antibody



[Go to Product page](#)

1 Image

Overview

| | |
|--------------|--------------------------------------|
| Quantity: | 200 µL |
| Target: | GRB14 |
| Reactivity: | Human, Rat, Mouse |
| Host: | Rabbit |
| Clonality: | Polyclonal |
| Conjugate: | This GRB14 antibody is un-conjugated |
| Application: | Western Blotting (WB) |

Product Details

| | |
|------------------|------------------------------------|
| Immunogen: | Recombinant protein of human GRB14 |
| Isotype: | IgG |
| Characteristics: | Polyclonal Antibody |
| Purification: | Affinity purification |

Target Details

| | |
|-------------------|---|
| Target: | GRB14 |
| Alternative Name: | GRB14 (GRB14 Products) |
| Background: | The product of this gene belongs to a small family of adapter proteins that are known to interact with a number of receptor tyrosine kinases and signaling molecules. This gene encodes a growth factor receptor-binding protein that interacts with insulin receptors and insulin-like growth-factor receptors. This protein likely has an inhibitory effect on receptor |

Target Details

tyrosine kinase signaling and, in particular, on insulin receptor signaling. This gene may play a role in signaling pathways that regulate growth and metabolism. Alternative splicing results in multiple transcript variants.

Molecular Weight: Observed_MW: 61 kDa
Calculated_MW: 51 kDa/60 kDa

Gene ID: 2888

UniProt: [Q14449](#)

Application Details

Application Notes: WB 1:500-1:1000

Restrictions: For Research Use only

Handling

Format: Liquid

Concentration: 1 mg/mL

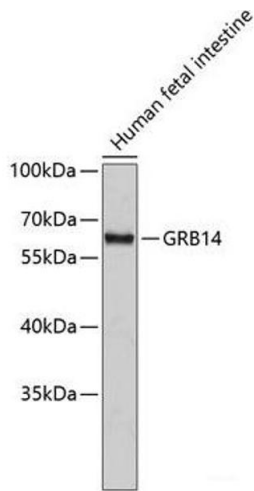
Buffer: PBS with 0.02 % sodium azide, 50 % glycerol, pH 7.3

Preservative: Sodium azide

Precaution of Use: This product contains Sodium azide: a POISONOUS AND HAZARDOUS SUBSTANCE which should be handled by trained staff only.

Storage: -20 °C

Storage Comment: Store at -20°C. Avoid freeze / thaw cycles.



Western Blotting

Image 1. Western blot analysis of extracts of Human fetal intestine using GRB14 Polyclonal Antibody.