

Datasheet for ABIN7260649

**anti-NME3 antibody****1** Image[Go to Product page](#)

## Overview

Quantity:	200 µL
Target:	NME3
Reactivity:	Human, Mouse, Rat
Host:	Rabbit
Clonality:	Polyclonal
Conjugate:	This NME3 antibody is un-conjugated
Application:	Immunohistochemistry (IHC)

## Product Details

Immunogen:	Recombinant fusion protein of human NME3 (NP_002504.2).
Isotype:	IgG
Characteristics:	Polyclonal Antibody
Purification:	Affinity purification

## Target Details

Target:	NME3
Alternative Name:	NME3 ( <a href="#">NME3 Products</a> )
Background:	<p>Nucleoside diphosphate kinase 3 is an enzyme that in humans is encoded by the NME3 gene.</p> <p>Major role in the synthesis of nucleoside triphosphates other than ATP. The ATP gamma phosphate is transferred to the NDP beta phosphate via a ping-pong mechanism, using a phosphorylated active-site intermediate. Probably has a role in normal hematopoiesis by</p>

## Target Details

inhibition of granulocyte differentiation and induction of apoptosis.

Gene ID: 4832

UniProt: [Q13232](#)

Pathways: [Nucleotide Phosphorylation](#), [Ribonucleoside Biosynthetic Process](#)

## Application Details

Application Notes: IHC 1:50-1:100

Restrictions: For Research Use only

## Handling

Format: Liquid

Concentration: 1 mg/mL

Buffer: PBS with 0.02 % sodium azide, 50 % glycerol, pH 7.3

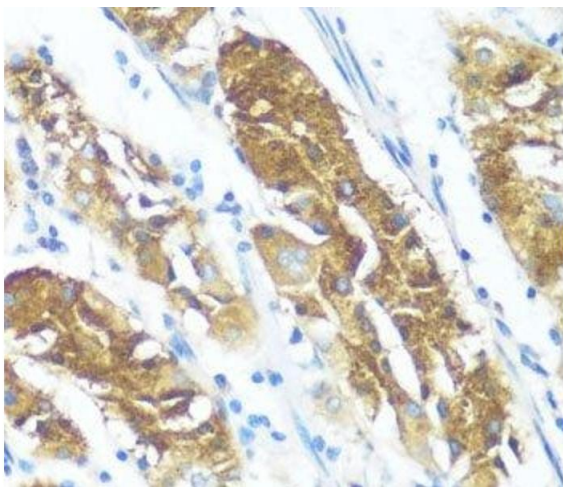
Preservative: Sodium azide

Precaution of Use: This product contains Sodium azide: a POISONOUS AND HAZARDOUS SUBSTANCE which should be handled by trained staff only.

Storage: -20 °C

Storage Comment: Store at -20°C. Avoid freeze / thaw cycles.

## Images



### Immunohistochemistry (Paraffin-embedded Sections)

**Image 1.** Immunohistochemistry of paraffin-embedded Human stomach using NME3 Polyclonal Antibody at dilution of 1:100 (40x lens).