

Datasheet for ABIN7260663
anti-SERPINA3 antibody

3 Images

[Go to Product page](#)

Overview

Quantity:	200 µL
Target:	SERPINA3
Reactivity:	Human, Mouse, Rat
Host:	Rabbit
Clonality:	Polyclonal
Conjugate:	This SERPINA3 antibody is un-conjugated
Application:	Immunohistochemistry (IHC)

Product Details

Immunogen:	Recombinant fusion protein of human SERPINA3 (NP_001076.2).
Isotype:	IgG
Characteristics:	Polyclonal Antibody
Purification:	Affinity purification

Target Details

Target:	SERPINA3
Alternative Name:	SERPINA3 (SERPINA3 Products)
Background:	The protein encoded by this gene is a plasma protease inhibitor and member of the serine protease inhibitor class. Polymorphisms in this protein appear to be tissue specific and influence protease targeting. Variations in this protein's sequence have been implicated in Alzheimer's disease, and deficiency of this protein has been associated with liver disease.

Target Details

Mutations have been identified in patients with Parkinson disease and chronic obstructive pulmonary disease.

Gene ID: 12

UniProt: [P01011](#)

Application Details

Application Notes: IHC 1:50-1:200

Restrictions: For Research Use only

Handling

Format: Liquid

Concentration: 1 mg/mL

Buffer: PBS with 0.02 % sodium azide, 50 % glycerol, pH 7.3

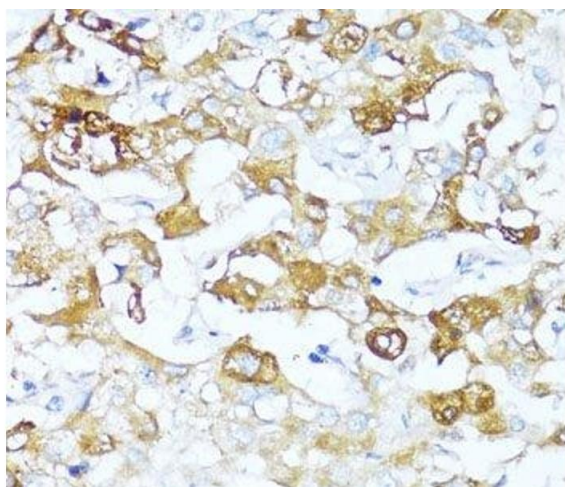
Preservative: Sodium azide

Precaution of Use: This product contains Sodium azide: a POISONOUS AND HAZARDOUS SUBSTANCE which should be handled by trained staff only.

Storage: -20 °C

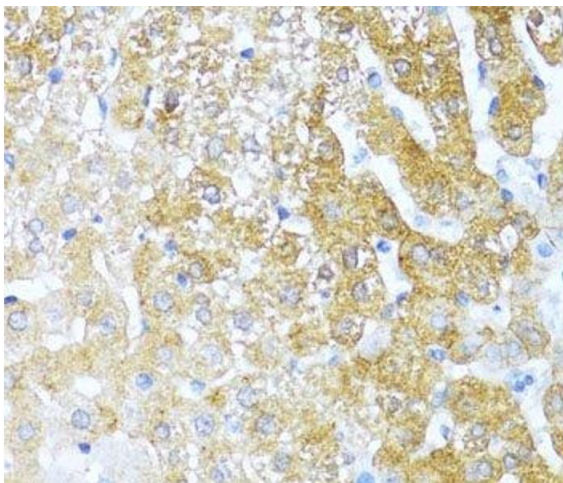
Storage Comment: Store at -20°C. Avoid freeze / thaw cycles.

Images



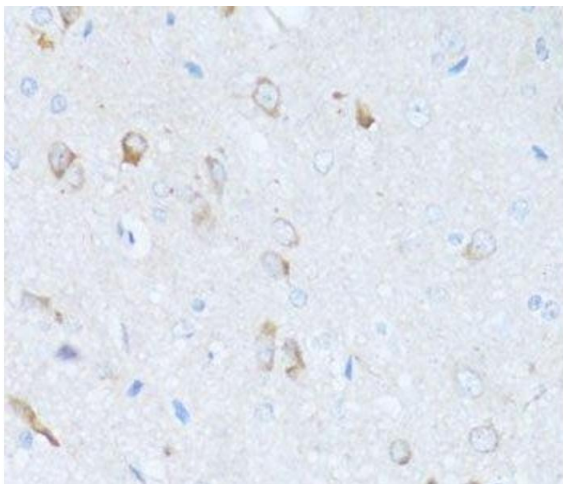
Immunohistochemistry (Paraffin-embedded Sections)

Image 1. Immunohistochemistry of paraffin-embedded Human liver cancer using SERPINA3 Polyclonal Antibody at dilution of 1:100 (40x lens).



Immunohistochemistry (Paraffin-embedded Sections)

Image 2. Immunohistochemistry of paraffin-embedded Rat liver using SERPINA3 Polyclonal Antibody at dilution of 1:100 (40x lens).



Immunohistochemistry (Paraffin-embedded Sections)

Image 3. Immunohistochemistry of paraffin-embedded Rat brain using SERPINA3 Polyclonal Antibody at dilution of 1:100 (40x lens).