

Datasheet for ABIN7260671

**anti-RHOB antibody**

## 2 Images

[Go to Product page](#)

## Overview

Quantity:	200 µL
Target:	RHOB
Reactivity:	Human, Mouse
Host:	Rabbit
Clonality:	Polyclonal
Conjugate:	This RHOB antibody is un-conjugated
Application:	Immunohistochemistry (IHC)

## Product Details

Immunogen:	A synthetic peptide of human RHOB (NP_004031.1).
Isotype:	IgG
Characteristics:	Polyclonal Antibody
Purification:	Affinity purification

## Target Details

Target:	RHOB
Alternative Name:	RHOB ( <a href="#">RHOB Products</a> )
Background:	Ras homolog gene family, member B, also known as RHOB, is a protein which in humans is encoded by the RHOB gene. RHOB is a member of the Rho GTP-binding protein family. Mediates apoptosis in neoplastically transformed cells after DNA damage. It is not necessary for development but affects cell adhesion and growth factor signaling in transformed cells. It plays

## Target Details

a negative role in tumorigenesis as deletion causes tumor formation. It involved in intracellular protein trafficking of a number of proteins, and serves as a microtubule-dependent signal that is required for the myosin contractile ring formation during cell cycle cytokinesis. Required for genotoxic stress-induced cell death in breast cancer cells.

Gene ID: 388

UniProt: [P62745](#)

## Application Details

Application Notes: IHC 1:50-1:100

Restrictions: For Research Use only

## Handling

Format: Liquid

Concentration: 1 mg/mL

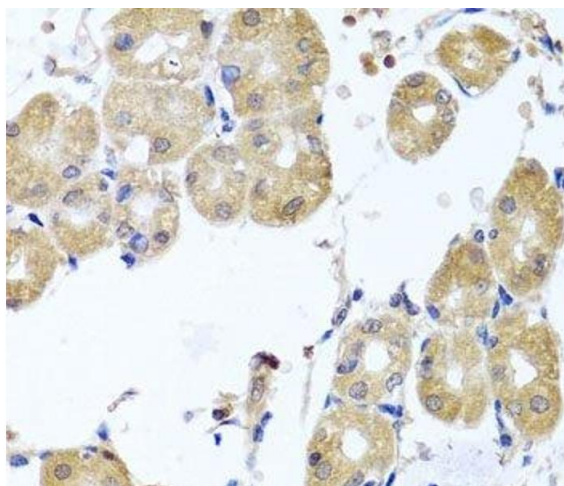
Buffer: PBS with 0.02 % sodium azide, 50 % glycerol, pH 7.3

Preservative: Sodium azide

Precaution of Use: This product contains Sodium azide: a POISONOUS AND HAZARDOUS SUBSTANCE which should be handled by trained staff only.

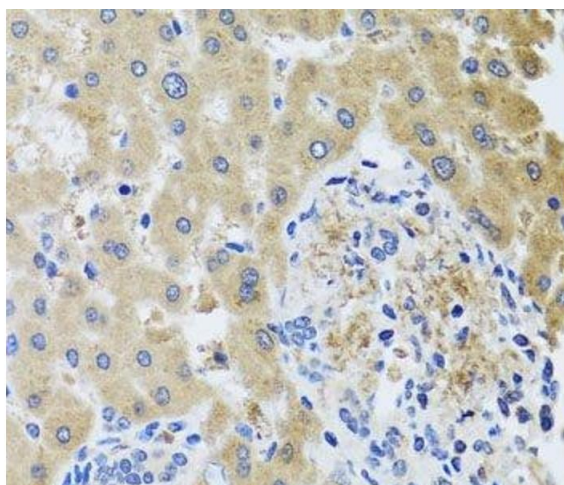
Storage: -20 °C

Storage Comment: Store at -20°C. Avoid freeze / thaw cycles.



#### Immunohistochemistry (Paraffin-embedded Sections)

**Image 1.** Immunohistochemistry of paraffin-embedded Human stomach using RHOB Polyclonal Antibody at dilution of 1:100 (40x lens).



#### Immunohistochemistry (Paraffin-embedded Sections)

**Image 2.** Immunohistochemistry of paraffin-embedded Human liver damage using RHOB Polyclonal Antibody at dilution of 1:100 (40x lens).