



[Go to Product page](#)

Datasheet for ABIN7260711 anti-DISC1 antibody

3 Images

Overview

Quantity:	200 µL
Target:	DISC1
Reactivity:	Human, Mouse, Rat
Host:	Rabbit
Clonality:	Polyclonal
Conjugate:	This DISC1 antibody is un-conjugated
Application:	Western Blotting (WB), Immunohistochemistry (IHC)

Product Details

Immunogen:	Recombinant fusion protein of human DISC1 (NP_001158009.1).
Isotype:	IgG
Characteristics:	Polyclonal Antibody
Purification:	Affinity purification

Target Details

Target:	DISC1
Alternative Name:	DISC1 (DISC1 Products)
Background:	This gene encodes a protein with multiple coiled coil motifs which is located in the nucleus, cytoplasm and mitochondria. The protein is involved in neurite outgrowth and cortical development through its interaction with other proteins. This gene is disrupted in a t(1,11)(q42.1,q14.3) translocation which segregates with schizophrenia and related psychiatric

Target Details

disorders in a large Scottish family. Alternate transcriptional splice variants, encoding different isoforms, have been characterized.

Molecular Weight: Observed_MW: 105 kDa
Calculated_MW: 22 kDa/37-38 kDa/6-93 kDa

Gene ID: 27185

UniProt: [Q9NRI5](#)

Pathways: [Regulation of Cell Size](#)

Application Details

Application Notes: WB 1:500-1:2000 IHC 1:50-1:200

Restrictions: For Research Use only

Handling

Format: Liquid

Concentration: 1 mg/mL

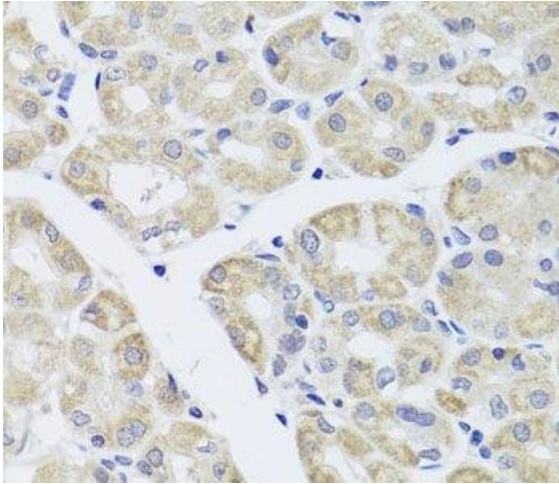
Buffer: PBS with 0.02 % sodium azide, 50 % glycerol, pH 7.3

Preservative: Sodium azide

Precaution of Use: This product contains Sodium azide: a POISONOUS AND HAZARDOUS SUBSTANCE which should be handled by trained staff only.

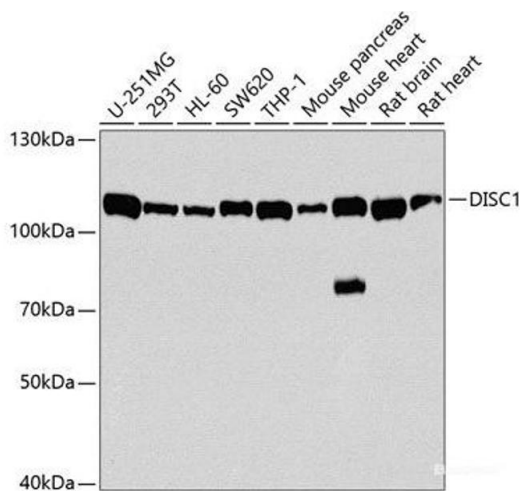
Storage: -20 °C

Storage Comment: Store at -20°C. Avoid freeze / thaw cycles.



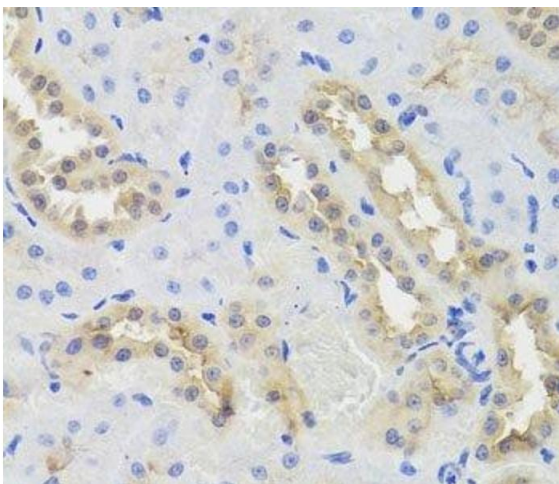
Immunohistochemistry (Paraffin-embedded Sections)

Image 1. Immunohistochemistry of paraffin-embedded Human stomach using DISC1 Polyclonal Antibody at dilution of 1:100 (40x lens).



Western Blotting

Image 2. Western blot analysis of extracts of various cell lines using DISC1 Polyclonal Antibody at dilution of 1:1000.



Immunohistochemistry (Paraffin-embedded Sections)

Image 3. Immunohistochemistry of paraffin-embedded Rat kidney using DISC1 Polyclonal Antibody at dilution of 1:100 (40x lens).