

Datasheet for ABIN7260721

anti-ENPP7 antibody**1** Image[Go to Product page](#)

Overview

Quantity:	200 µL
Target:	ENPP7
Reactivity:	Human
Host:	Rabbit
Clonality:	Polyclonal
Conjugate:	This ENPP7 antibody is un-conjugated
Application:	Western Blotting (WB)

Product Details

Immunogen:	A synthetic peptide of human ENPP7
Isotype:	IgG
Characteristics:	Polyclonal Antibody
Purification:	Affinity purification

Target Details

Target:	ENPP7
Alternative Name:	ENPP7 (ENPP7 Products)
Background:	The protein encoded by this gene is an intestinal alkaline sphingomyelin phosphodiesterase that converts sphingomyelin to ceramide and phosphocholine. The encoded protein is anchored in the cell membrane, and it may function to protect the intestinal mucosa from inflammation and tumorigenesis. This protein is glycosylated and also exhibits

Target Details

	lysophosphatidylcholine hydrolase activity.
Molecular Weight:	Observed_MW: 51 kDa Calculated_MW: 51 kDa
Gene ID:	339221
UniProt:	Q6UWV6

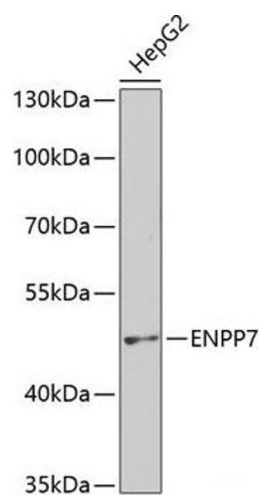
Application Details

Application Notes:	WB 1:500-1:2000
Restrictions:	For Research Use only

Handling

Format:	Liquid
Concentration:	1 mg/mL
Buffer:	PBS with 0.02 % sodium azide, 50 % glycerol, pH 7.3
Preservative:	Sodium azide
Precaution of Use:	This product contains Sodium azide: a POISONOUS AND HAZARDOUS SUBSTANCE which should be handled by trained staff only.
Storage:	-20 °C
Storage Comment:	Store at -20°C. Avoid freeze / thaw cycles.

Images



Western Blotting

Image 1. Western blot analysis of extracts of HepG2 cells using ENPP7 Polyclonal Antibody at dilution of 1:400.